



TO: Board of County Commissioners

DATE: November 30, 2021

DEPARTMENT: County Administration

PRESENTED BY: Judy Williams, Strategy and Integration Manager; Morgan Munro and Natalie Dybens, Chair and Vice Chair of the Independent Redistricting Committee

AGENDA ITEM TITLE: ORDINANCE 21-12/ In the Matter of Reviewing and Modifying the District Boundaries for Election of County Commissioners (Map Q)

I. MOTION

- Nov. 30th: Move to continue the public hearing, closing the public hearing for today and continuing the hearing tomorrow, December 1, 2021 at a 5:30PM time certain.
- Dec. 1st: Move to approve Ordinance 21-11 (Map Q) as presented.

OR

Move to set a Third Reading for Wednesday, December 15, 2021

II. AGENDA ITEM SUMMARY

Today is the Second Reading and Public Hearing at 1:30PM (time certain) for Ordinances 21-11 (Map J), 21-12 (Map Q), and 21-13 (Map C) with a continued Public Hearing on December 1, 2021 at 5:30PM (time certain).

On November 9, 2021, the Board received a presentation on the 2021 redistricting process and a report from the Independent Redistricting Committee (IRC), see Attachment A, for the detailed report. The IRC's charge was to prepare 2-4 proposed redistricting plans in ordinance form for adoption by the Lane County Board of Commissioners as required by the Lane County Home Rule Charter. The Board has received three (3) maps in ordinance form. A First Reading of Ordinances 21-11

(Map J), 21-12 (Map Q), and 21-13 (Map C) occurred on November 9, 2021 as well as the setting of a Second Reading and Public Hearing for November 30, 2021 at 1:30PM (time certain) and a continued Public Hearing on December 1, 2021 at 5:30PM (time certain).

The Lane County Home Rule Charter requires the Board of Commissioners redraw the boundaries for the Lane County Commissioner Districts, by ordinance, not less than every ten (10) years. The Lane County Charter requires the Board of Commissioner's by ordinance to adopt new commissioner boundaries not less than every ten years; they were last modified on October 28, 2011. A prior ordinance, Ordinance 21-03, enacted on June 8, 2021, served as a place holder to make certain the Board remained in compliance with the Lane County Charter deadlines for redistricting.

III. BACKGROUND/IMPLICATIONS OF ACTION

A. Board Action and Other History

On April 7, 2020, the Board directed County Counsel to look into appointing an independent commission on redistricting, look into best practices and establish a ballot timeline.

From July 28, 2020 to August 24, 2020 staff worked to create process that included organizations and individuals that were to be sent invitations to attend listening sessions.

On September 15, 2020 the Board held the first listening session soliciting public input on how the redistricting process should be conducted. The presentations focused on three questions: *1) Do you want elected officials making the final decision on the location of boundaries? 2) If not, how do you think the members of the commission that is drawing the boundaries should be selected? 3) What specific changes do you propose for the redistricting process?*

On December 2, 2020 a work session on redistricting was conducted and asked participants to focus their testimony on three questions: *1) Do you have any concerns about the current redistricting process? 2) If so, what are those concerns? 3) What specific changes do your propose for the redistricting process?*

On January 27, 2021 the Board of Commissioners directed County Counsel and staff to develop a process for advertising and selecting potential IRC members and develop draft by-laws for the proposed IRC.

On February 16, 2021 the United States Census Bureau announced that it would have redistricting data available to the states by September 30, 2021. This announcement required the Board to address the issue regarding the date and conflict it created with the deadlines established in the Lane County Home Rule Charter.

On March 2, 2021 County Counsel presented a draft set of by-laws for the IRC to the Board. The Board also discussed potential solutions caused by the delayed delivery of census data. The Board directed the County Counsel to return with two drafts of ordinances. The first was to address the inability to meet the deadline in the Lane Charter, addressed with Ordinance 21-03 approved on June 8, 2021. The second Ordinance, 21-04 approved on June 8, 2021 created an Independent Redistricting Committee to develop multiple redistricting plans using the 2020 Census data.

On June 15, 2021, an Independent Redistricting Committee vacancy notice was sent out, followed by advertising for the application process. The vacancy closed at 4:00pm on July 16, 2021. County Counsel received fifty (50) timely submitted applications.

On July 20, 2021, the Board of Commissioners discussed which portions of the applications should be redacted in order to do their best to have a “blind” process. Names, addresses, emails, phone numbers would be redacted from each of the applications.

On July 23, 2021, the Board of Commissioners each received an individual packet of redacted applications for their district. Some follow up took place through July 29, 2021 to get any remaining pieces of application material to the commissioners.

On August 3, 2021, staff presented an overview, timeline and proposed next steps for redistricting for 2021. Following that meeting, per Lane Code 21.001, commissioners selected one applicant each for a total of five (5) members.

On August 31, 2021, staff presented an update to the Board during County Administration Announcements.

On September 21, 2021, the Board of County Commissioners approved the IRC bylaws.

B. Policy Issues

Local Requirements

Home Rule Charter:

Section 10. MEMBERSHIP, ELECTION AND TENURE

1. The board of commissioners shall consist of five county commissioners.
2. Except as this charter provides to the contrary, each commissioner shall be elected by district for a four-year term.

3. The board of county commissioners shall be elected as follows.
 - c) The following election districts shall be established from which the commissioners shall be elected:
 - i. The West Lane County District, generally comprised of western Lane County outside the metropolitan area. Except as otherwise provided in this charter, the commissioner elected from this district shall fill Position No. 1.
 - ii. The Springfield District, generally comprised of the Springfield metropolitan area. Except as otherwise provided in this charter, the commissioner elected from this district shall fill Position No. 2.
 - iii. The South Eugene District, generally comprised of the southern Eugene metropolitan area. Except as otherwise provided in this charter, the commissioner elected from this district shall fill Position No. 3.
 - iv. The North Eugene District, generally comprised of the northern Eugene metropolitan area. Except as otherwise provided in this charter, the commissioner elected from this district shall fill Position No. 4.
 - v. The East Lane County District, generally comprised of eastern Lane County outside the metropolitan area. Except as otherwise provided in this charter, the commissioner elected from this district shall fill Position No. 5.
 - d) In accordance with Federal, State, or County census figures, the boundaries of the five districts shall be drawn by the board of commissioners so as not to deny any person equal protection of the law. The board of commissioners shall, not less than every 10 years, initiate review of the population densities of each district and modify boundaries when necessary. No boundary creation, position designation or boundary change shall disqualify a commissioner from completing the term of office to which that commissioner was elected or appointed.
 - e) The board of commissioners shall adopt by ordinance the district boundaries as required by subsection (d) above. District boundaries shall be finally adopted at least six months prior to any election for which they are to be effective.

Lane Code 21.001 Redistricting

Per the Lane Code Chapter 21.001-Redistricting, (D), duties of the IRC:

1. The IRC will prepare at least two (2) but not more than four (4) proposed redistricting plans in ordinance form for adoption by the Lane County Board of Commissioners as required by the Lane County Home Rule

- Charter Chapter III, section 3 subsections (d) and (e); and,
2. The proposed plans must comply with the relevant law relating to redistricting, voting rights and all applicable local, state and federal requirements; and,
 3. The proposals must be ranked by the IRC in the order of its preference and the IRC must report to the Lane County Board of Commissioners the strengths and weaknesses of each proposal.

State Requirements

Oregon Constitution

Under Article IV, Section 6 of the Oregon Constitution, the Legislative Assembly is responsible for drawing legislative and Congressional maps.

Secretary of State Redistricting Directive

Each county clerk, and any local governments or special government bodies that fix electoral district boundaries based on population, shall consider the following when drawing district or precinct boundaries:

Each district or precinct, as nearly as practicable, shall:

- Be contiguous;
- Utilize existing geographic or political boundaries;
- Not divide communities of common interest; and
- Be connected by transportation links.
- For districts, be of equal population.

No district shall be drawn for the purpose of favoring any political party, incumbent elected official or other person. No district shall be drawn for the purpose of diluting the voting strength of any language or ethnic minority group.

Each county clerk and any local government, as defined in ORS 174.116, or special government body, as defined in ORS 174.117, that fixes or modifies electoral district boundaries based on population shall, to the greatest extent practicable, consider newly drawn legislative and congressional district boundaries as well as the boundaries of neighboring jurisdictions when drawing districts.

C. Board Goals

This redistricting process has led to impacts to all four of the strategic priorities of a Safe, Healthy County, Vibrant Communities, Robust Infrastructure and Our People and Partnerships. More specifically, the engagement efforts we have sought to incorporate including the equity efforts are linked to the Vibrant Communities priority. In addition, the strategic lenses such as collective impact and equity lenses have also been incorporated.

D. Financial and/or Resource Considerations

The County has contracted with Lane Council of Governments (LCOG) to help provide mapping capabilities and to finalize mapping services for elections after boundaries are approved and adopted. The costs for this agreement shall not exceed \$7,000. In addition, the County purchased two licenses of ESRI Redistricting Software at \$4,500 each in order for the committee to access redistricting software capabilities. Finally, there has been significant staff time devoted to supporting the IRC in County Administration, County Counsel and Elections.

E. Health Implications

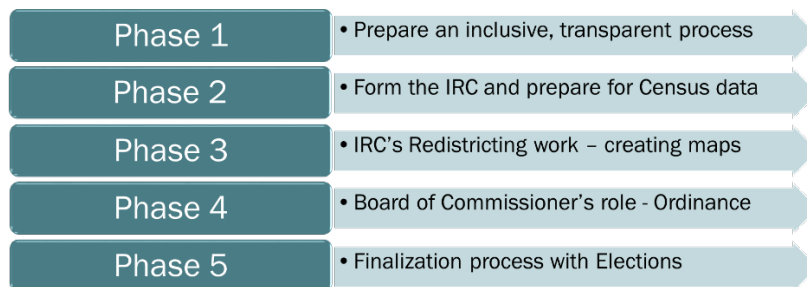
There are no significant direct health implications associated with the tasks for this September 21, 2021 Board discussion on redistricting.

F. Analysis

As indicated in previous presentations about redistricting, staff have categorized the Lane County redistricting efforts into five (5) unique phases.

With the report and map proposals presented today in ordinance form from the IRC to the Board of County Commissioners, we are officially shifting into the 4th Phase of Lane County redistricting process.

The following graphic simply shows a visual of the five phases.



Phase 1

In Phase 1, which began in April of 2020, the Board began the conversation regarding redistricting options. The Board directed staff to start with a process that involved gathering input from a wide variety of entities and individuals. The Board had two specific listening sessions and multiple discussions in public meetings. The Board wanted to create a process that was inclusive and transparent. The Board felt very strongly that there should be an independent committee to do the redistricting in an effort to bring more credibility and trust in the resulting redistricting plan.

These discussions led to the creation of an Independent Redistricting Committee, enacted through an ordinance establishing Lane Code 20.001.

With all of the public input and process development, an “interested parties” email list was created in order to keep interested parties involved throughout the process and ultimately throughout the remaining phases.

Phase 2

Phase 2 included the formation of the IRC and committee preparation work for Census data. With the use of a “blind” process, as outlined in Lane Code 21.001 (C), the commissioners were given a packet of applications from their district. On August 3, 2021, each commissioner selected one member for a total of 5 members per Lane Code 21.001. Those 5 members received all of the remaining applications the week of August 9, 2021, and met four (4) times to ultimately chose the remaining 10 regular members and 3 alternate members using the same “blind” process per Lane Code on August 27, 2021. A summary of the IRC membership, including a couple of changes mid-way, can be found in Attachment B.

The 18-member committee started meeting on September 1, 2021 and started with an election of a Chair and Vice Chair, a review of the draft bylaws, discussion on schedules for future meetings. In addition, the IRC received an overview of the map drawing process and information to select a redistricting software vendor. Staff provided a training that was recorded and the public was encouraged to attend as well. The training consisted of:

- What is redistricting? Why does this matter?
- Federal / State / Local Charter Requirements
- State Directive Overview / Criteria to be Considered
- Overview of common terms
- Community – What’s your community? Natural boundaries?
- Gerrymandering
- Boundary considerations and precincts
- Overview of population changes / review
- What contributes to a change in population?

Population

The primary objective for the committee’s work was creating districts that had populations that were as equal as practicable. To evenly divide our county population among five districts would result in districts with 76,594 residents in each. The tables below show the 2020 population numbers, what the equal population amounts would be and the variances. In comparison, the 2010 population is also shown just below the 2020 population breakdown.

Lane County Commissioner Districts		2020 Population	Equal Population	Variation	Percent Variation
1	West Lane	75,193	76,594	-1,401	1.83%
2	Springfield	73,015	76,594	-3,579	4.67%
3	Eugene-South	78,684	76,594	2,090	-2.73%
4	Eugene-North	80,883	76,594	4,289	-5.60%
5	East Lane	75,195	76,594	-1,399	1.83%
TOTAL POPULATION		382,970	382,970		

Lane County Commissioner Districts		2010 Population	Equal Population	Variation	Percent Variation
1	West Lane	70,993	70,343	650	-0.92%
2	Springfield	69,711	70,343	-632	0.90%
3	Eugene-South	70,315	70,343	-28	0.04%
4	Eugene-North	70,969	70,343	626	-0.89%
5	East Lane	69,727	70,343	-616	0.88%
TOTAL POPULATION		351,715	351,715		

Redistricting software training sessions also took place in order to get to know the software, look at impacts to county boundaries and population changes and impacts to other district boundaries.

Throughout the meetings, staff regularly consulted with the League of Women Voters to both inform the process and the committee on various items.

Phase 3

Phase 3 consisted of reviewing the census population information, monitoring the State process and timelines and creating maps.

The 18-member committee met on the following 14 dates: September 1st, September 10th, September 20th, September 22nd (Training), September 27th, October 6th, October 11th, October 14th, October 18, October 21st, October 25th, October 28th, November 1st and November 4th. All meetings have occurred in the course of a public meeting that conformed to all of the requirements of the Oregon Public Meetings Law. Each of the meetings were recorded, minutes were taken and a website: www.LaneCountyOR.gov/IRC was kept up to date throughout in order to be transparent in the process.

Several individual IRC members spent many additional hours outside of this time to create maps. Beginning on October 6, 2021, the IRC regularly began presenting and discussing maps to the full group.

Public comment was offered at every IRC meeting as well as written public comments. In addition to advertising the meetings on the county calendar, through the County's routine notification processes, press releases, staff kept the interested parties in the loop throughout the process. See Attachment C for a summary of the written public comments received for October 25th, October 28th, November 1st and November 4th.

In total, nineteen (19) maps were submitted and shared by seven (7) individual mapmakers of the committee. Several iterations of maps were shared and some maps were ultimately withdrawn by the mapmakers. The final day the IRC

determined to accept maps was on October 18th, with minor changes to the remaining maps on October 22nd.

Conflict of Interest

On October 21st, a member of the IRC brought forward a question about a conflict of interest among an individual on the committee. Once specific information was shared, legal counsel and the Oregon Government Ethics Commission (OGEC) weighed in on the issue. In short, all committee persons are essentially seen as public officials, per ORS 244.020 (15) as they are acting as "agents" of the Board of County Commissioners. This means they have ethical obligations and exposure. When there are questions raised for any public official that is not legal in nature but pertains to ethical questions, the County falls to the Oregon Government Ethics Commission (OGEC). In this case, the individual committee member referenced below did reach out to the OGEC and received a written response determining that there was not an actual conflict of interest.

ORS 244.020(1) defines an actual conflict of interest and ORS 244.020(13) defines a potential conflict of interest. A public official is met with either an actual or potential conflict of interest when participating in an official capacity, in any action, decision, or recommendation, if the effect would or could be to the private pecuniary benefit or detriment of the public official, the public official's relative, or any business with which either are associated. The difference between an actual and potential conflict of interest is determined by the certainty of the private financial impact. An actual conflict of interest occurs when a public official participates in an official action that would have a direct financial impact on themselves, a relative, or any business with which they or a relative is associated. A potential conflict of interest occurs when a public official's action, decision or recommendation could have a financial impact on themselves, a relative, or any business with which they or a relative is associated.

For the sake of transparency, the committee went through a process (publicly) to state any potential conflicts of interest and made those disclosers known. None of the activities mentioned from any one of the committee members resulted in an actual conflict of interest. Attachment D is a summary of the findings from Legal Counsel, a FAQ from the Chair and a written opinion from OGEC regarding the situation.

IRC Map Selection Vote, Rank by Preference, Strengths and Weaknesses

Per the Duties of the IRC according to Lane Code 21.001 (D) the committee was asked to prepare 2-4 redistricting plans, rank them by preference order and identify strengths and weaknesses. The IRC voted on October 25th to winnow down the maps for consideration from nine (9) maps to four (4). See Attachment E for a Map Selection Vote for October 25th.

On October 28, 2021, the IRC voted to send three (3) maps forward to the

Commissioners. The IRC proposes the following maps (in preference order): Map J, Map Q, and Map C. See Attachment F for the October 28th Map Selection Vote.

The IRC was also asked to include the strengths and weaknesses of each map. A report from the IRC to the Board of County Commissioners was approved by the committee on November 4, 2021. This report walks through the proposed maps in more detail and addresses the strengths and weaknesses. This information is found in Attachment A.

Population Summary of the Three Map (Plans)

A primary objective for the IRC’s work was creating districts that had populations that were as equal as practicable. To evenly divide our county population among five districts would result in districts with 76,594 residents in each. The committee decided that a 1% variance was acceptable.

Map "J"				
	Total	Equal Population	Difference	% Difference
D1	76,321	76,594	-273	-0.36%
D2	76,308	76,594	-286	-0.37%
D3	76,478	76,594	-116	-0.15%
D4	77,035	76,594	441	0.58%
D5	76,829	76,594	235	0.31%

Map "Q"				
	Total	Equal Population	Difference	% Difference
D1	77,151	76,594	557	0.73%
D2	76,792	76,594	198	0.26%
D3	75,863	76,594	-731	-0.95%
D4	76,449	76,594	-145	-0.19%
D5	76,716	76,594	122	0.16%

Map "C"				
	Total	Equal Population	Difference	% Difference
D1	75,929	76,594	-665	-0.87%
D2	76,084	76,594	-510	-0.67%
D3	77,336	76,594	742	0.97%
D4	76,466	76,594	-128	-0.17%
D5	77,156	76,594	562	0.73%

Phase 4

In Phase 4 of the redistricting efforts, the IRC prepares maps, in ordinance form to the commissioners for consideration and adoption. A presentation will be made on November 9, 2021 as well as a First Reading of the Ordinances and setting a

Second Reading and Public Hearing for November 30, 2021 at 1:30PM (time certain). The Board of County Commissioners will ultimately approve a final map.

Phase 5

In phase 5, the elections office will continue to work with respective cities and districts to complete their political boundary adjustments based on census population by end of the calendar year.

Administratively, it is most efficient in preparing ballots if state representative districts, commissioner, city council and other special districts share the same boundaries, to the extent feasible. Staff would support granting the County Clerk discretion after the Board approves a final boundary configuration in order to fine-tune the commissioner district boundaries in *de minimis* ways that align the boundaries with existing districts, provided the population equality is not significantly altered.

The Deadline for the County Clerk to complete precinct boundary changes is January 31, 2022 in order to implement all political boundary changes within the voter registration database. In important date of note, is that March 8, 2022 is the candidate filing deadline for the May 17, 2022 primary election.

Finally, as of the date of this memorandum, it is known that there are challenges at the State level to both the Congressional redistricting plan and the Legislative House and Senate plan. Staff are monitoring timelines associated with these processes and will keep the Board informed as we approach the November 30th Second Reading and Public Hearing date.

G. Alternatives/Options

The Board's options are outlined above in Section 1, Motion.

IV. RECOMMENDATION

The recommendation from staff is that is to move the ordinances through the ordinary ordinance process so that the public has an opportunity to review the maps further and provide testimony at the Public Hearing scheduled for November 30, 2021 at 1:30PM (time certain) and December 1, 2021 at 5:30PM (time certain).

V. TIMING/IMPLEMENTATION

Staff will monitor the challenges to the State redistricting efforts and update the Board accordingly.

VI. FOLLOW-UP

Staff will plan for a 2nd Reading and Public Hearing on November 30, 2021 and December 1, 2021 with an ultimate vote on one of the Ordinances presented before you.

In a separate conversation with the Board, staff will bring back a Feedback Report: a separate report that includes robust feedback from the committee on the entire IRC process (what went well, what could be improved, ideas for next time, concerns, etc.). This report will include multiple parts:

- A report from the chair and vice chair
- An (optional) report that committee members may individually or cooperatively submit
- A report from staff

VII. ATTACHMENTS

ORDINANCE 21-12/ In the Matter of Reviewing and Modifying the District Boundaries for Election of County Commissioners (Map Q)

Attachment A	Independent Redistricting Committee Report to the Lane County Commissioners
Attachment B	Independent Redistricting Committee Membership
Attachment C	Summary of Public Comment from October 25 th , October 28 th , November 1 st and November 4 th
Attachment D	Summary of the Findings Related to Conflicts of Interest
Attachment E	Map Selection Vote Summary for October 25 th
Attachment F	Map Selection Vote Summary for October 28 th

BEFORE THE BOARD OF COMMISSIONERS OF LANE COUNTY, OREGON

ORDINANCE NO: 21-12

In the Matter of Reviewing and Modifying the District Boundaries for Election of County Commissioners (Map Q).

WHEREAS, Lane County is governed by the Lane County Home Rule Charter approved by the voters at the November 6, 1962 General Election; and,

WHEREAS, the Lane County Home Rule Charter Chapter III Sections 10(d) and 10(e) require the Board of Commissioners in accordance with federal census figures to redraw the boundaries for the five (5) commissioner districts; and,

WHEREAS, the Lane County Home Rule Charter Chapter III, Section 10(d) requires the Board of Commissioners to engage in the review of the boundaries for the five (5) commissioner districts not less than every ten (10) years; and,

WHEREAS, the Lane County Home Rule Charter Chapter III, Section 10(e) requires the Board of Commissioners to adopt the five (5) commissioner districts by ordinance not less than every ten (10) years; and,

WHEREAS, the last ordinance creating the boundaries for the five (5) commissioner districts was adopted on by the Board of Commissioners on October 26, 2011; and,

WHEREAS, the World Health Organization, the President of the United States and the Governor of Oregon has declared COVID-19 a global pandemic, a national emergency and statewide public health emergency; and,

WHEREAS, the Lane County Board of Commissioners has declared COVID-19 a Lane County public health emergency on March 17, 2020 with Board Order 20-03-17-06 and extended the emergency declarations on multiple occasions; and,

WHEREAS, Lane County has experienced continued closures or restrictions to government and non-government services, and the cancellation of large gatherings of people, which has made the gathering of census data more difficult; and,

WHEREAS, on July 28, 2020 the Board of Commissioners directed the Lane County Counsel to develop of process to obtain public input on the redistricting process and the format for an evening public comment devoted to redistricting; and,

WHEREAS, the Board of Commissioners held a public evening comment session on September 15, 2020 soliciting public input on how the redistricting process should be conducted;

WHEREAS, the Board of Commissioners held a work session on December 2, 2020 and heard testimony from the League of Women Voters and the Democratic Party of Lane County on their suggestions for the redistricting process; and,

WHEREAS, on January 27, 2021 the Board of Commissioners heard a presentation regarding the creation of the Independent Redistricting Committee and at the

conclusion of the meeting the Board directed the Lane County Counsel to develop of a process for selecting members of the Independent Redistricting Committee and draft by-laws for the Independent Redistricting Committee; and,

WHEREAS, on February 16, 2021, the United States Census Bureau announced that it would have redistricting data available to the states by September 30, 2021; and,

WHEREAS, the State of Oregon will needed to perform certain redistricting work with the 2021 census data before Lane County can complete its redistricting plan; and,

WHEREAS, the amount of time between September 30, 2021 and October 26, 2021 was insufficient to permit a complete and thoughtful review of population densities to permit the creation of commissioner district boundaries so as not to deny any person equal protection of the law; and,

WHEREAS, on March 2, 2021 the Board of Commissioners discussed the inability to complete the redistricting process in a meaningful and thoughtful manner before October 26, 2021 as required by the Lane County Home Rule Charter; and,

WHEREAS, on March 2, 2021 the Board directed the Lane County Counsel to draft two ordinances relating to redistricting: the first to be a place holder to make certain the Board remained in compliance with the Lane Charter deadlines for redistricting and the second to create an Independent Redistricting Committee that would perform the required redistricting using the 2020 census data; and,

WHEREAS, on June 8, 2021 the Board adopted two proposed ordinances, Ordinance 21-03, a place holder to make certain the Board remained in compliance with the Lane Charter deadlines for redistricting and Ordinance 21-04, to create an Independent Redistricting Committee, both Ordinances were on the same schedule so there would be no question redistricting would ultimately be performed using 2020 Census data; and,

WHEREAS, from September 1, 2021 through November 4, 2021, the Independent Redistricting Committee met and completed the duties of the Independent Redistricting Committee per Lane Code 21.001; and

WHEREAS, the Independent Redistricting Committee made a report to the Board, and the Board has fully considered the matter in accordance with the Home Rule Charter. Chapter III, including review of the Independent Redistricting Committee presentation on November 9, 2021, public hearings on the matter on November 30, 2021, and testimony and evidence presented during these proceedings

NOW, THEREFORE, the Board of County Commissioners of Lane County **ORDAINS** as follows:

1. The election districts from which County Commissioners shall be elected are hereby established as shown on the attached maps, and denominated as follows:
 - a) West Lane County District #1
 - b) Springfield District #2
 - c) South Eugene District #3
 - d) North Eugene District #4
 - e) East Lane County District #5

2. Upon approval of a final map, grant the County Clerk discretion to fine-tune the commissioner district boundaries in *de minimis* ways that align the boundaries with existing districts, provided the population equality is not significantly altered.
3. Upon enactment of the ordinance, the attached maps shall be recorded in the Lane County Deeds and Record. After recording, the appropriate recording identification shall be noted on the bottom of this ordinance.
4. Lane County Ordinance No. 9-11. Which previously set district boundaries is hereby repealed.

ENACTED this ____ day of _____, 2021

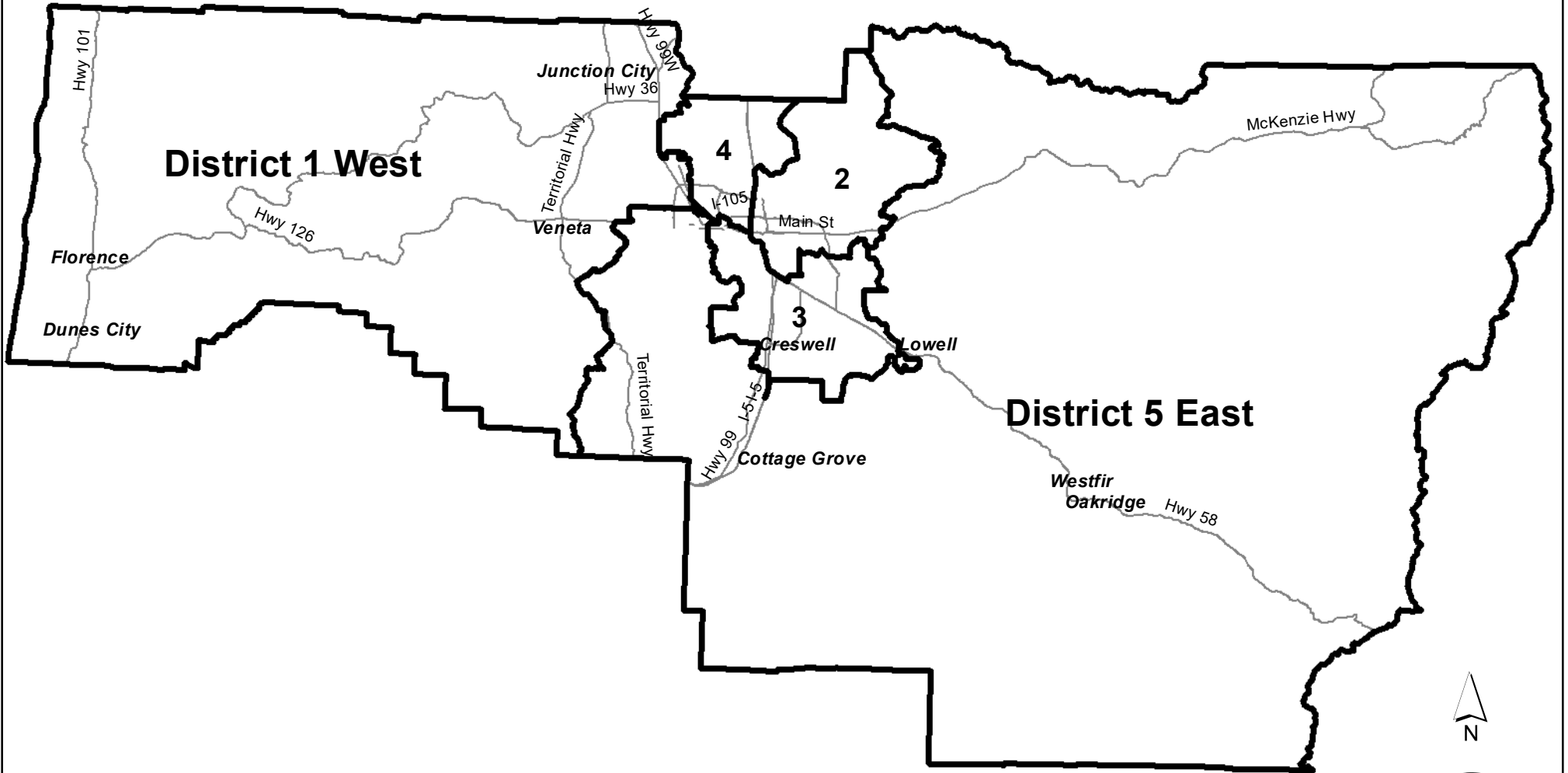
APPROVED AS TO FORM
Date _____

Joe Berney, Chair
Lane County Board of Commissioners

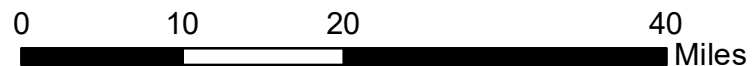
LANE COUNTY OFFICE OF LEGAL COUNSEL

Recording Secretary for this Meeting of the Board

Lane County Commissioner Districts - Map Q -

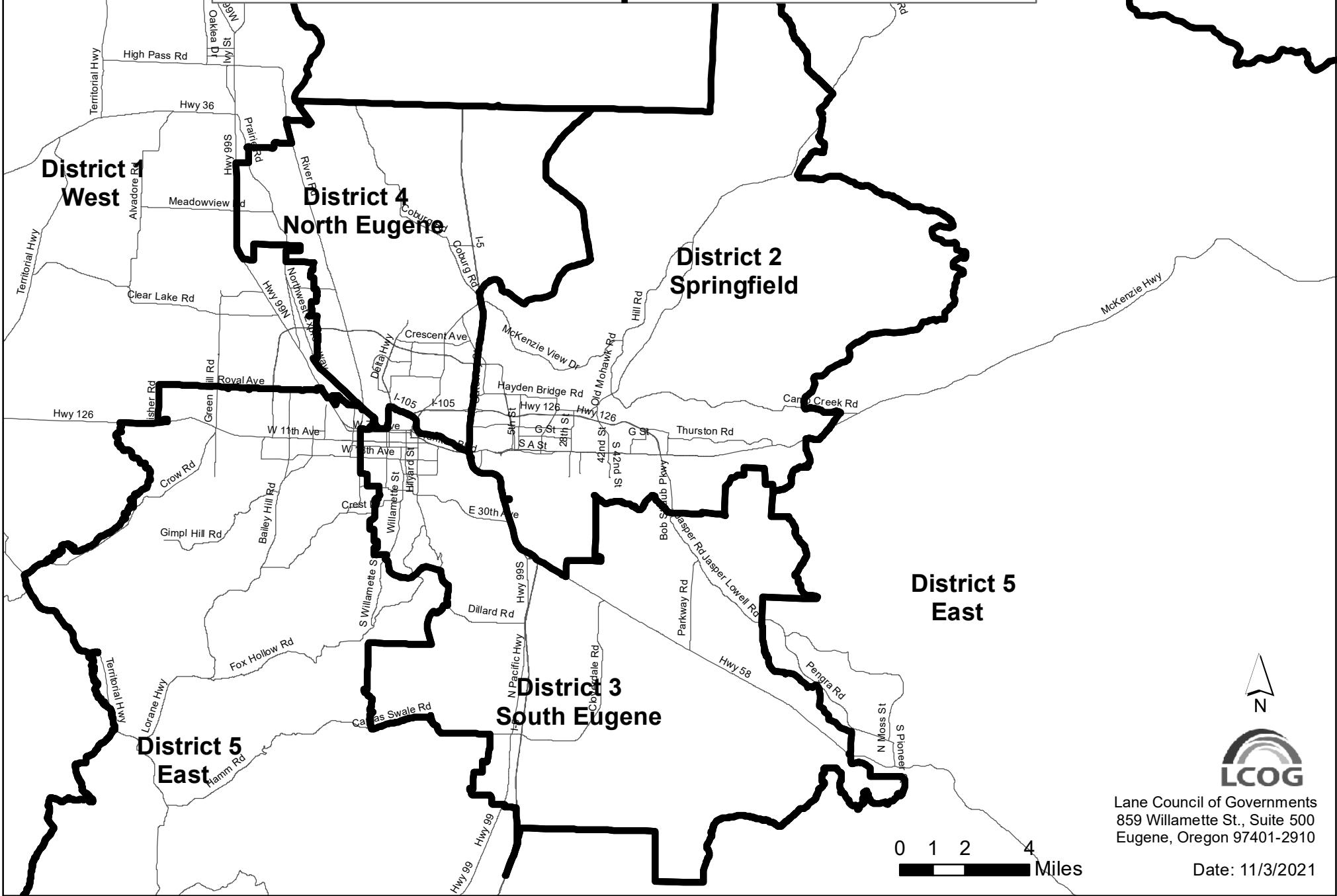


Lane Council of Governments
859 Willamette St., Suite 500
Eugene, Oregon 97401-2910

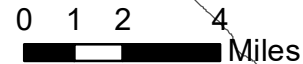


Date: 11/3/2021

Lane County Commissioner Districts - Map Q -



Lane Council of Governments
859 Willamette St., Suite 500
Eugene, Oregon 97401-2910



Date: 11/3/2021

Independent Review Committee Report to the Lane County Commissioners

Our committee was charged with the task of preparing between 2 and 4 proposed redistricting plans for the Lane County Commissioners.

In doing so, a primary objective for our work was creating districts that had populations that were as equal as practicable. To evenly divide our county population among five districts would result in districts with 76,594 residents in each. Our committee decided that a 1% variance was acceptable.¹ Commissioner districts on the proposed maps have populations that range from 1% less than 76,594 residents and 1% more than 76,594 residents. This range is from 75,828 to 77,360 residents.

The Lane County Charter describes commissioner districts that are “generally comprised” of Lane County within and outside of the metropolitan areas of Eugene and Springfield. As the population growth in our county is concentrated within the Urban Growth Boundary this left the committee an especially tough question to resolve. In order to establish districts with even populations, each map addresses this question in different ways.

The process of creating a commissioner district map is a series of contingent decisions, trade offs, and consequences. When boundaries are drafted for one district, those residents are excluded from neighboring districts. A seemingly great idea about how to set the boundary for one district may create such chaos in other districts that the idea must be set aside. Balancing the considerations required of the redistricting effort is complex, nuanced, and challenging.

Our committee proposes three maps for the commissioners' consideration. These maps make different choices in how they respond to the task given to this committee.

Our committee was asked to rank the proposed maps in order of preference. Our committee proposes the following maps (in preference order): Map J, Map Q, and Map C.

Our committee was asked to include the strengths and weaknesses of each map. As the commissioners will note, the strengths and weaknesses are often related.

¹ A 1% variance was also applied in the 2011 map process.

Map J

Strengths:

1. This map strives to unify the River Road/Santa Clara neighborhoods. This map places unincorporated portions of the River Road/Santa Clara neighborhoods in a commissioner district that represents other unincorporated areas. It utilizes the natural geographic boundary of the Willamette River to the East of the River Road/Santa Clara area and the railroad tracks to the West that cut off transportation links from the River Road/Santa Clara area to the Coburg Road and Bethel areas.
2. This map strives to unify the Bethel School District within one commissioner district.
3. This map strives to maintain Districts 1 and 5 as primarily outside of Eugene and Springfield city limits; excepting the River Road/Santa Clara neighborhoods which are placed in District 1 and the Churchill region which was placed in District 5 in the 2011 maps and remains in District 5 in this map.

Weaknesses:

1. In the 2011 map, the Bethel area was split between Districts 1 and 4. This map places the majority of the Bethel School District within District 4. In doing so, this map proposes extending District 4 northwest into an area previously included in District 1.
2. In the 2011 map, the River Road/Santa Clara area was split between Districts 1 and 4. This map places the majority of the River Road/Santa Clara neighborhoods within District 1. In doing so, this map proposes extending District 1 into an area previously included in District 4. The District 1 boundaries in the River Road/Santa Clara area follow the Willamette River for the eastern boundary and the school district boundary between 4J and Bethel for the southwestern boundary.
3. Like another map from this committee, this map would have the District 2 western boundary extend across I-5. This map places the Laurel Valley area just west of I-5 within District 2.

Map Q

Strengths:

1. This map strives to maintain transportation corridors within districts.
2. This map maintains I-5 as the western boundary of District 2.
3. This map places the majority of the Bethel School District within one district.
4. This map strives to unify school districts and 4J catchment areas within commissioner districts.
5. This map strives to unify the Churchill neighborhood within one district.
6. This map strives to unify the River Road/Santa Clara neighborhoods within one district.

Weaknesses:

1. Of the three maps presented, this map establishes districts with a greater percentage of land and population that are shared between areas within and outside of the Eugene and Springfield Urban Growth Boundaries.
2. This map divides the Marcola/Mohawk Valley area between Districts 2 and 5.
3. This map reconfigures the Bethel area. In the 2011 map, the Bethel area was split between Districts 1 and 4. This map places the majority of the Bethel School District within District 1. In doing so, this map proposes extending District 1 southeast into an area previously included in District 4. On this map the eastern boundary of District 1 follows the Bethel School District boundary and the southern boundary of District 1 follows the City of Eugene Ward 6 boundary along Royal Avenue. This places a section of the Bethel School District south of Royal Avenue into District 5.
4. In the 2011 map, the River Road/Santa Clara neighborhoods were split between Districts 1 and 4. This map places the majority of the River Road/Santa Clara neighborhoods within District 4. In doing so, this map proposes extending District 4 into an area previously included in District 1. The District 4 boundaries in the River Road/Santa Clara area would follow the school district boundary between 4J and Bethel for the southwestern boundary.

Map C

Strengths:

1. This map strives to make as few changes to the 2011 districts as possible. Of the three maps presented to the commission, this map moves the fewest residents out from their 2011 commissioner district and into a different district.
2. This map uses major roads for many district boundaries.
3. This map strives to maintain Districts 1 and 5 as primarily outside of the city limits of Eugene and Springfield; excepting the Churchill region which had previously been part of District 5 in the 2011 maps and remains part of District 5 in this map.

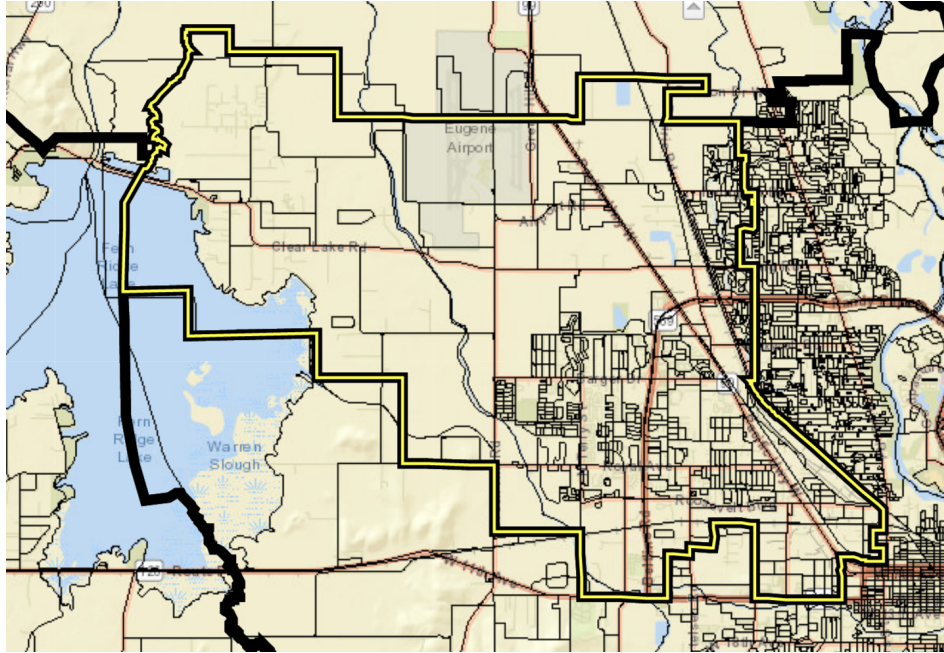
Weaknesses:

1. This map divides the Bethel neighborhood between Districts 1 and 4. This division carries over from the 2011 maps.
2. Like another map from this committee, this map would have the District 2 western boundary extend across I-5. This map places the area of Game Farm Road just west of I-5 within District 2. The transportation corridor of Game Farm Rd links this area with District 2.

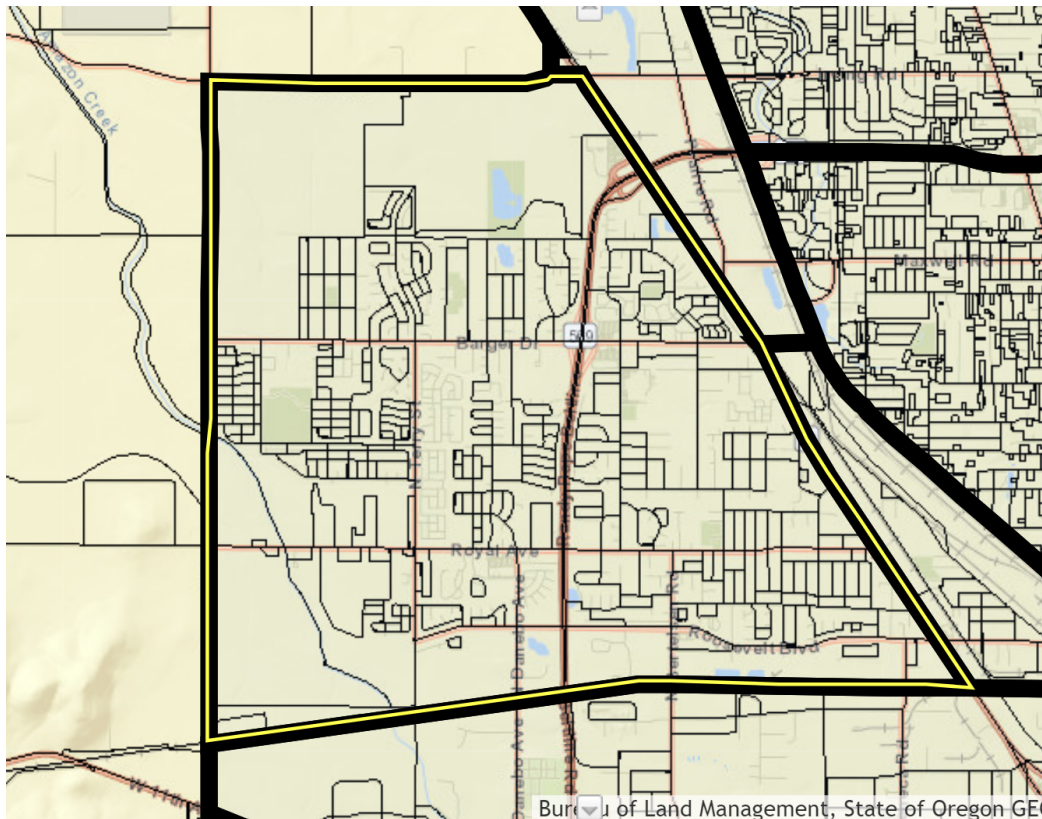
Bethel Terminology FAQ

The Bethel area can be identified in a few different ways. Two of these definitions are aspects of the maps presented by the committee. The Bethel School District boundary is different from the Active Bethel Citizens Eugene Neighborhood Association boundary.

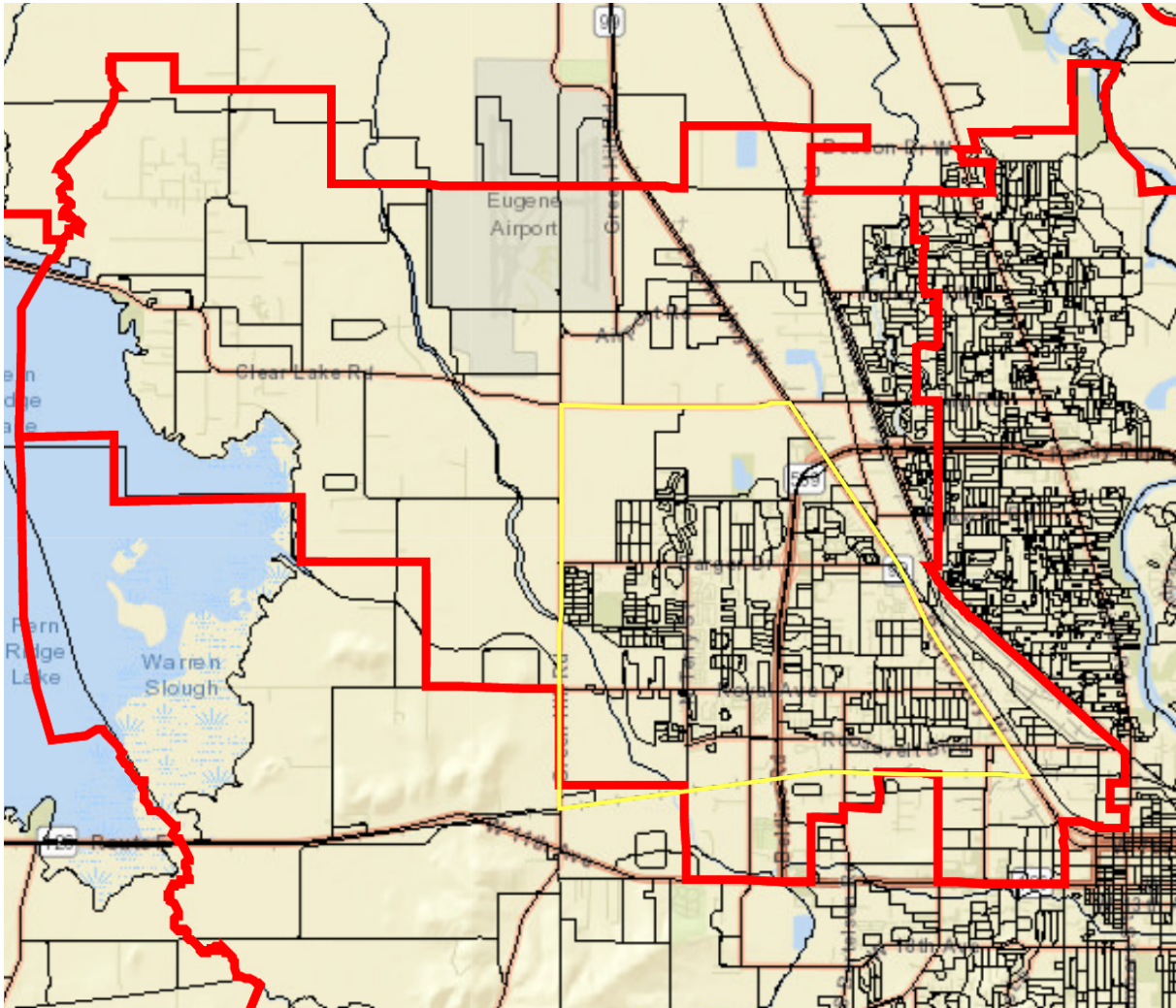
Bethel School District Boundary (yellow lines)



Active Bethel Citizens is a Eugene Neighborhood Association (yellow lines)



**Overlay with Bethel School District boundaries (in red) and
Active Bethel Citizens Neighborhood Association boundaries (in yellow)**



Population Summary Report

Starting with the existing district boundaries and then the three (3) proposed maps, the tables below show the 2020 population numbers, what the equal population amounts would be and the variances.

Existing District Boundaries				
	2020 Population	Equal Population	Difference	% Difference
D1	75,193	76,594	-1,401	1.83%
D2	73,015	76,594	-3,579	4.67%
D3	78,684	76,594	2,090	-2.73%
D4	80,883	76,594	4,289	-5.60%
D5	75,195	76,594	-1,399	1.83%

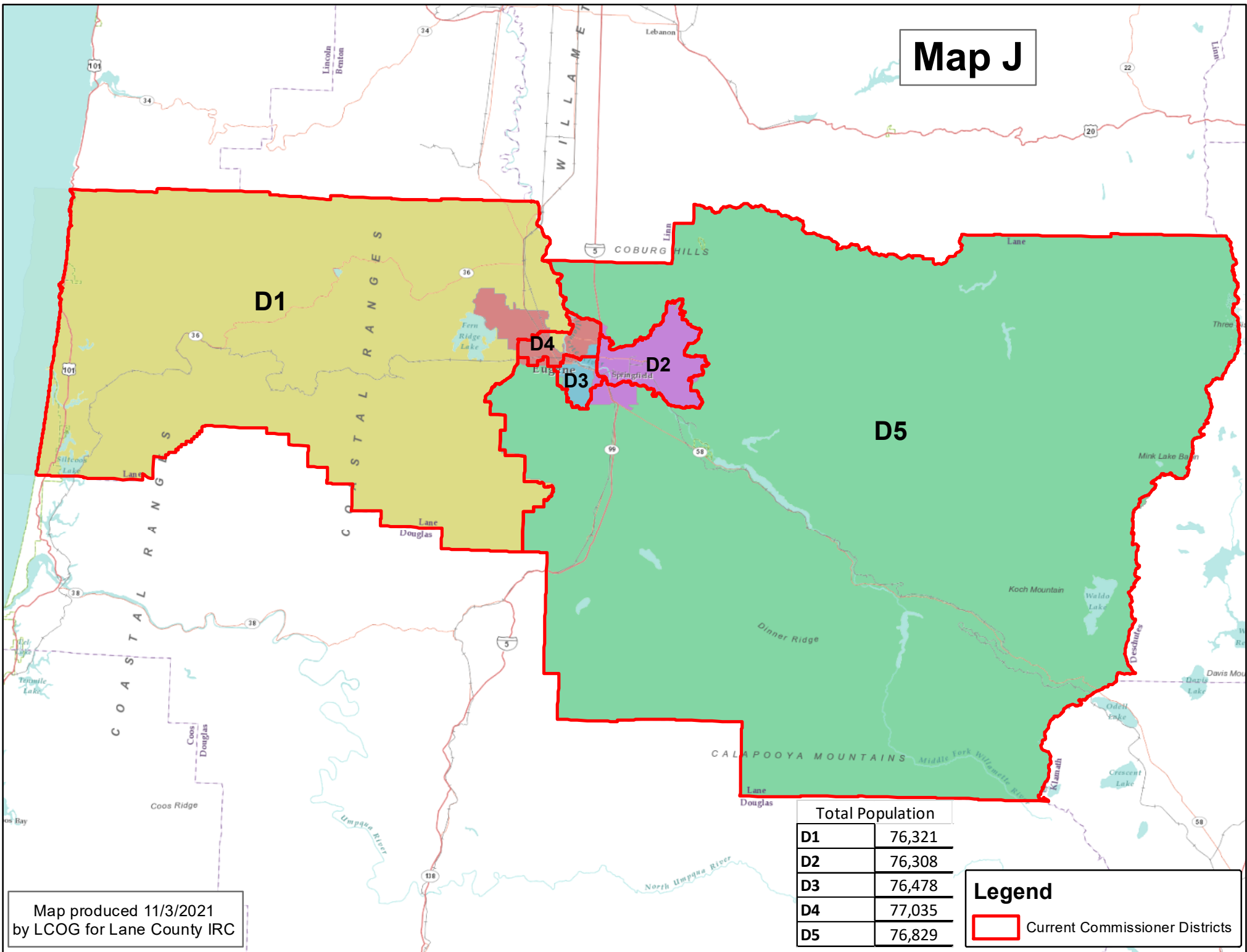
Map "J"				
	Total	Equal Population	Difference	% Difference
D1	76,321	76,594	-273	-0.36%
D2	76,308	76,594	-286	-0.37%
D3	76,478	76,594	-116	-0.15%
D4	77,035	76,594	441	0.58%
D5	76,829	76,594	235	0.31%

Map "Q"				
	Total	Equal Population	Difference	% Difference
D1	77,151	76,594	557	0.73%
D2	76,792	76,594	198	0.26%
D3	75,863	76,594	-731	-0.95%
D4	76,449	76,594	-145	-0.19%
D5	76,716	76,594	122	0.16%

Map "C"				
	Total	Equal Population	Difference	% Difference
D1	75,929	76,594	-665	-0.87%
D2	76,084	76,594	-510	-0.67%
D3	77,336	76,594	742	0.97%
D4	76,466	76,594	-128	-0.17%
D5	77,156	76,594	562	0.73%

The following pages depict the proposed maps (Map J, Map Q and Map C) in both a county view and a metro view.

Map J



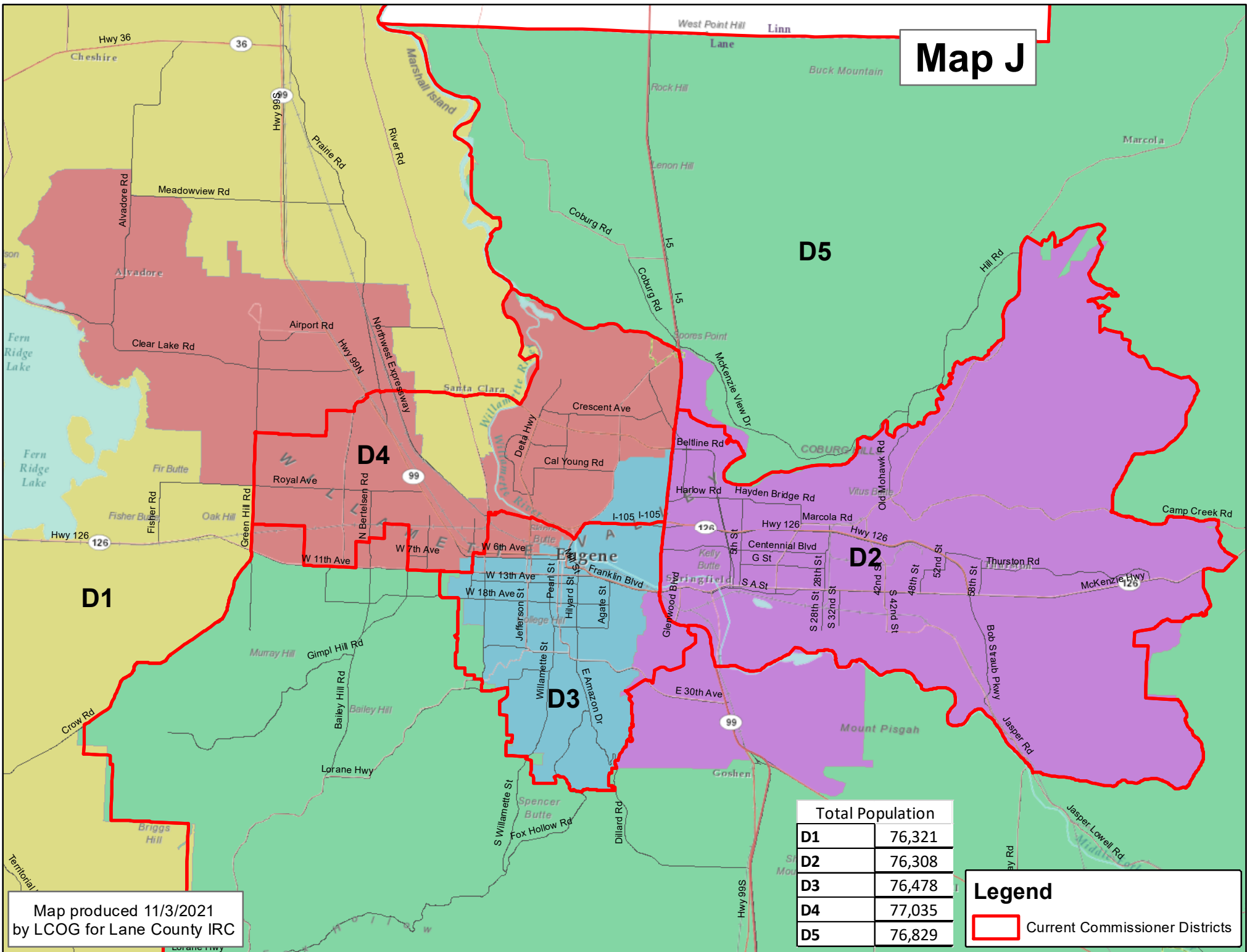
Total Population	
D1	76,321
D2	76,308
D3	76,478
D4	77,035
D5	76,829

Legend

Current Commissioner Districts

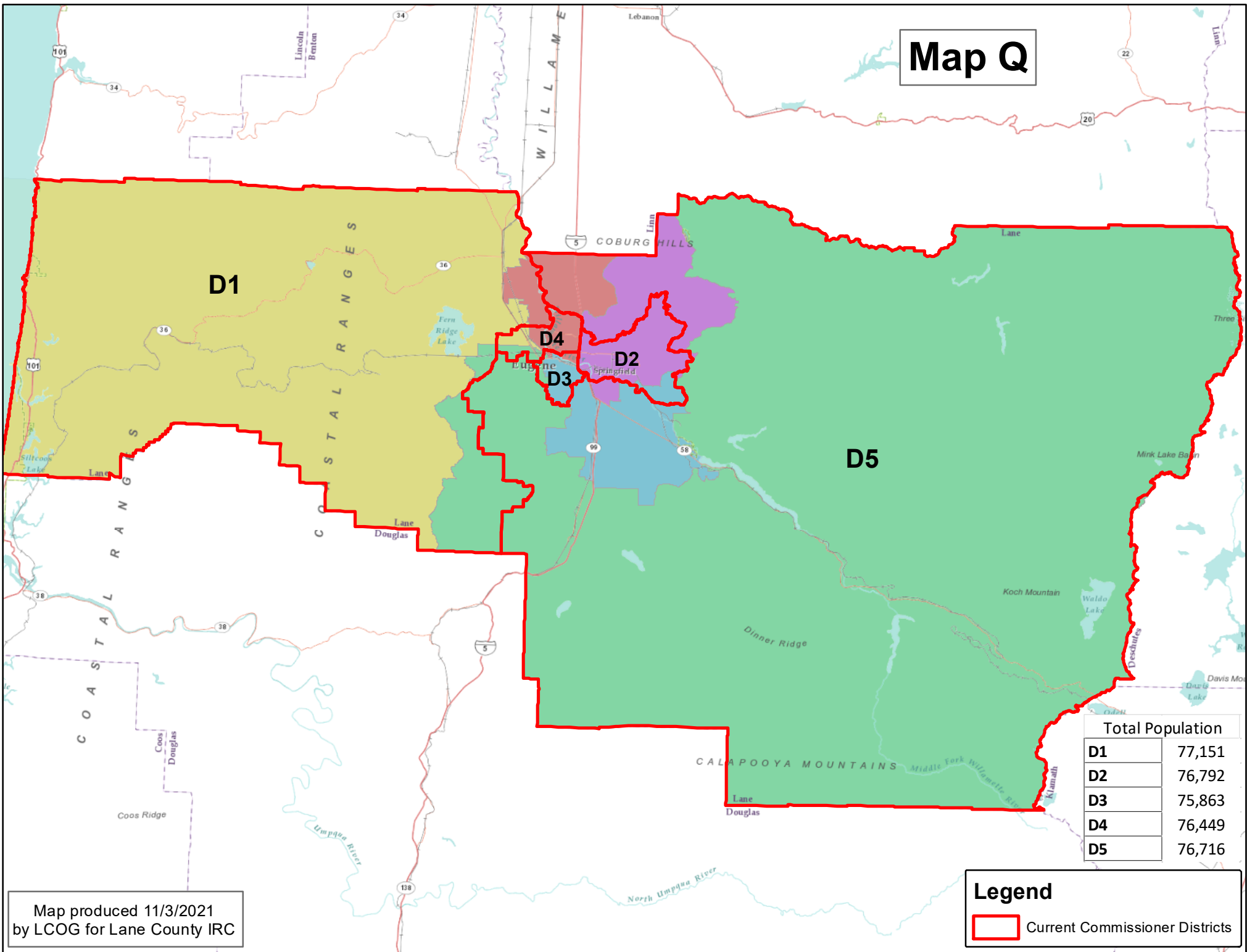
Map produced 11/3/2021
by LCOG for Lane County IRC

Map J



Map produced 11/3/2021
 by LCOG for Lane County IRC


Map Q



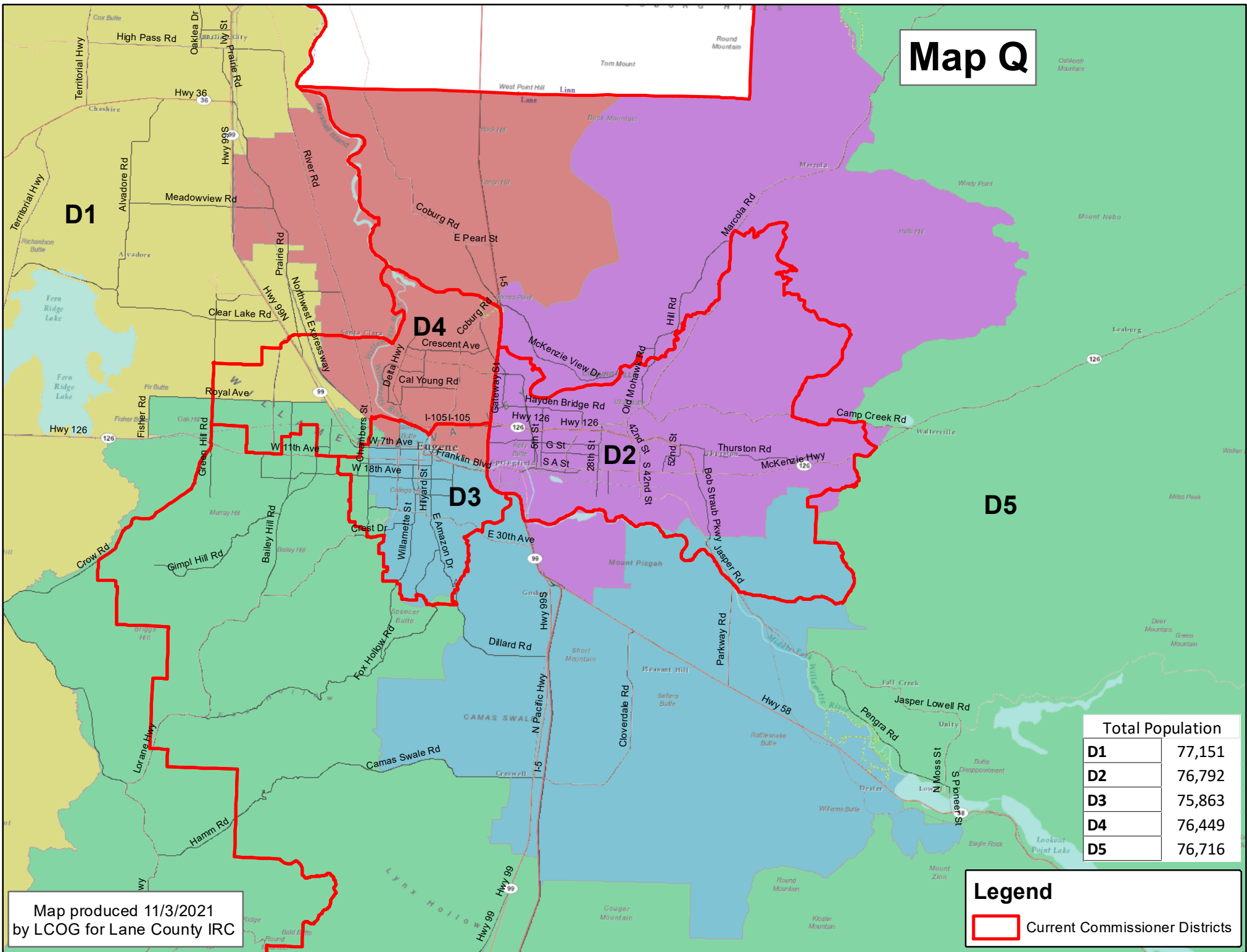
Total Population	
D1	77,151
D2	76,792
D3	75,863
D4	76,449
D5	76,716

Map produced 11/3/2021
by LCOG for Lane County IRC

Legend

 Current Commissioner Districts

Map Q



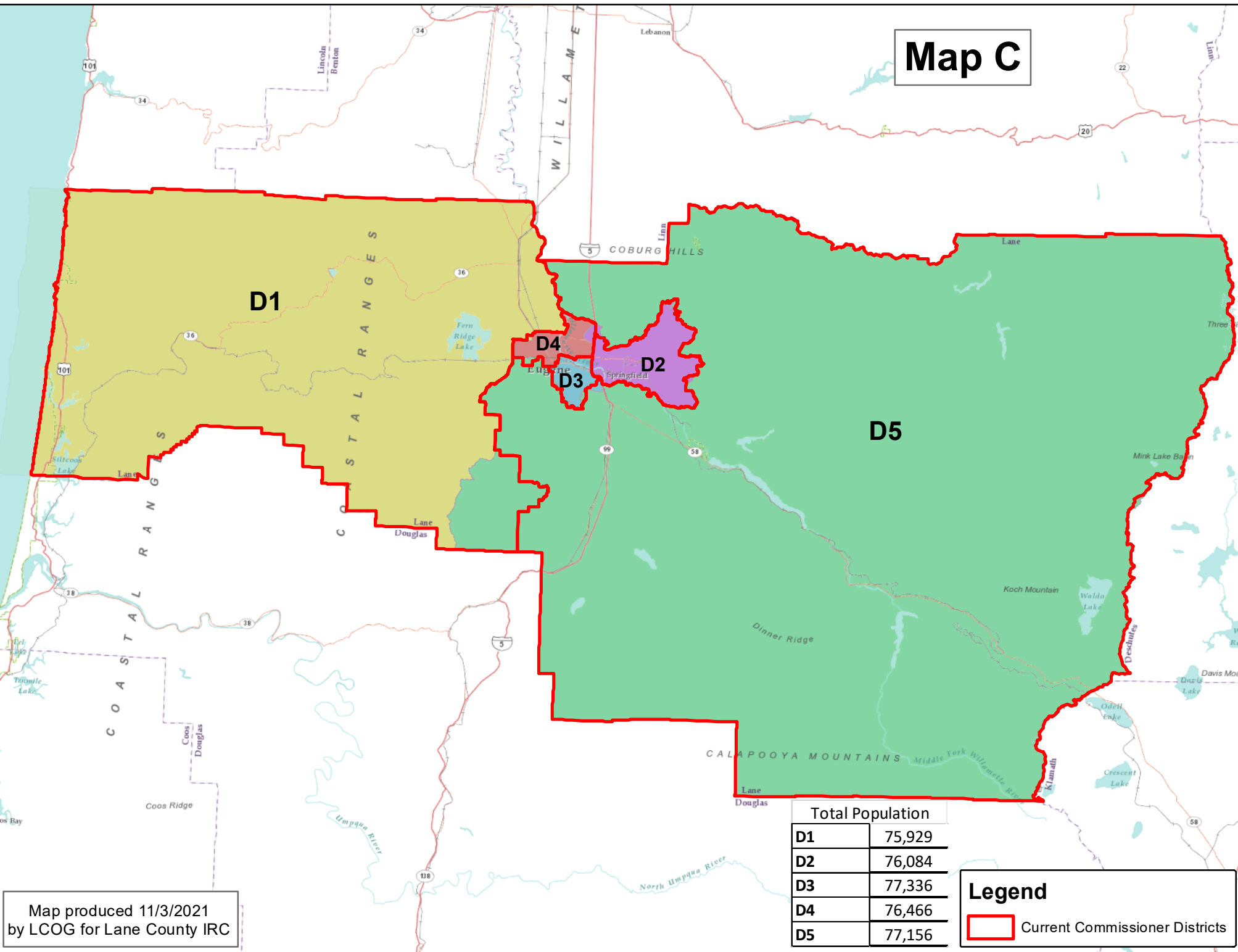
Total Population	
D1	77,151
D2	76,792
D3	75,863
D4	76,449
D5	76,716

Map produced 11/3/2021
by LCOG for Lane County IRC

Legend

Current Commissioner Districts

Map C



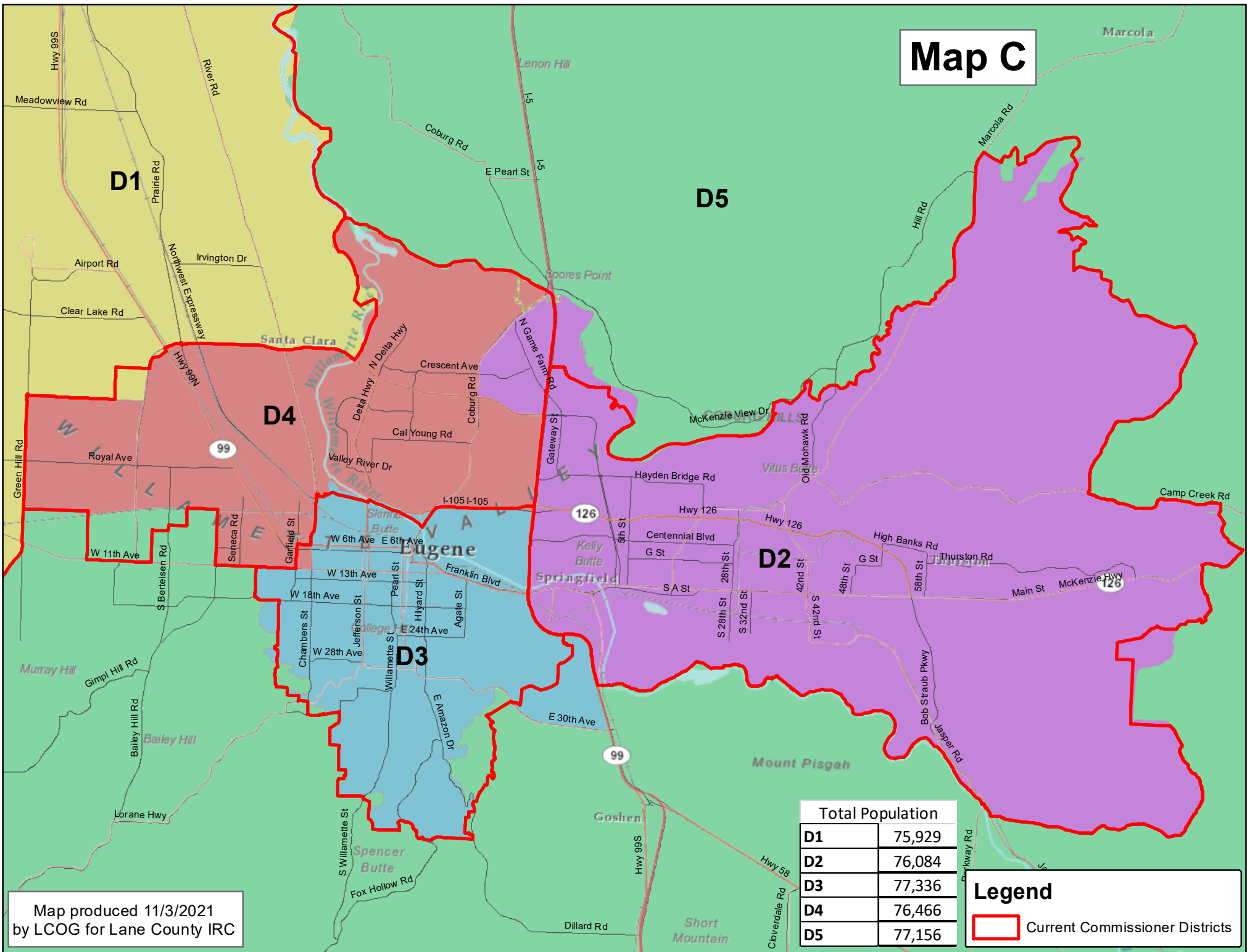
Total Population	
D1	75,929
D2	76,084
D3	77,336
D4	76,466
D5	77,156

Legend

Current Commissioner Districts

Map produced 11/3/2021
by LCOG for Lane County IRC

Map C



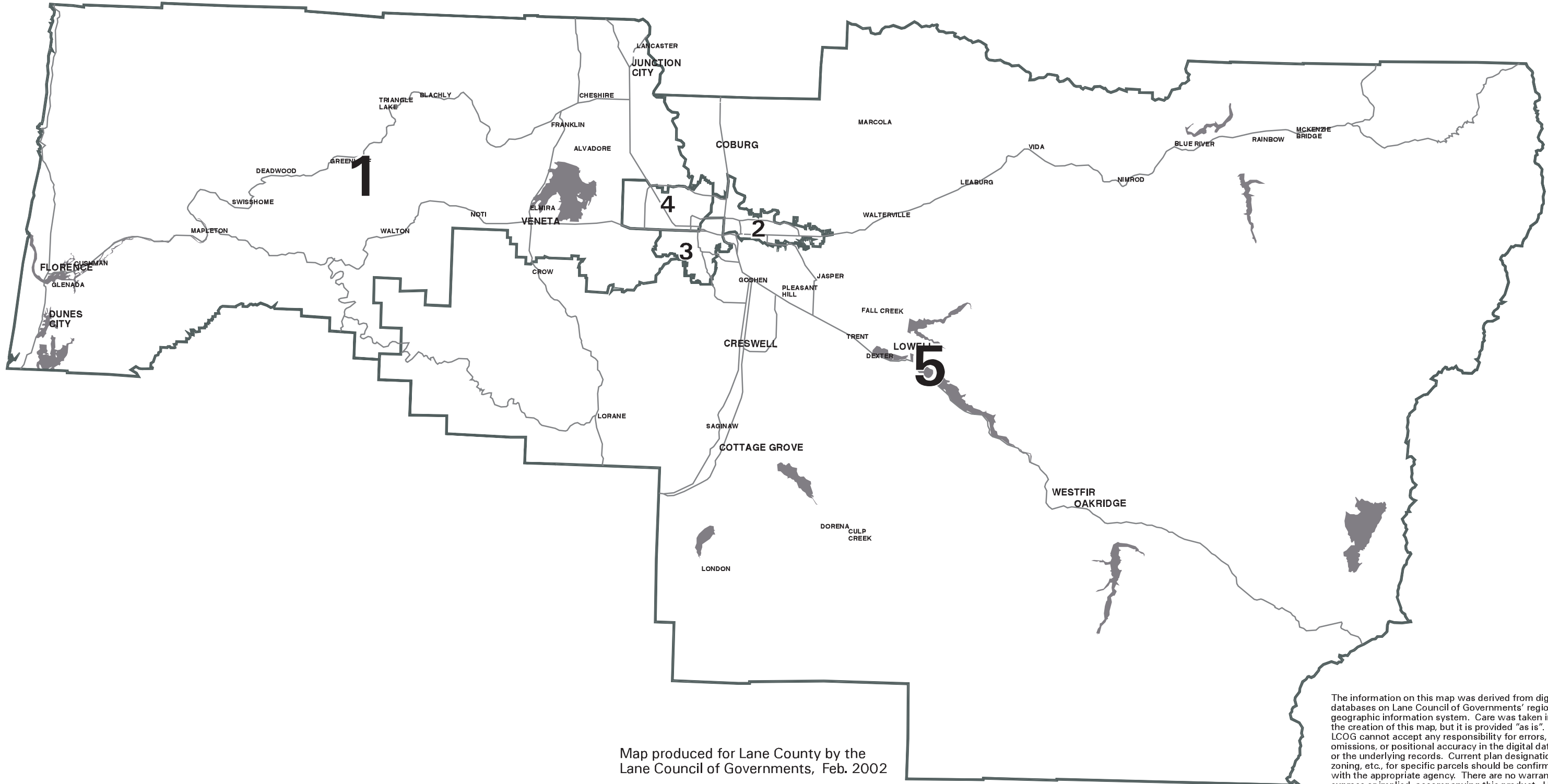
Total Population	
D1	75,929
D2	76,084
D3	77,336
D4	76,466
D5	77,156

Legend

Current Commissioner Districts

Map produced 11/3/2021
by LCOG for Lane County IRC

Lane County Commissioner Districts



Map produced for Lane County by the Lane Council of Governments, Feb. 2002

The information on this map was derived from digital databases on Lane Council of Governments' regional geographic information system. Care was taken in the creation of this map, but it is provided "as is". LCOG cannot accept any responsibility for errors, omissions, or positional accuracy in the digital data or the underlying records. Current plan designation, zoning, etc., for specific parcels should be confirmed with the appropriate agency. There are no warranties, express or implied, accompanying this product. However, notification of any errors will be appreciated.

Lane County Commissioner Districts Eugene - Springfield Area Detail Map

5

4

2

1

3



Map produced for Lane County by the Lane Council of Governments, Feb. 2002

The information on this map was derived from digital databases on Lane Council of Governments' regional geographic information system. Care was taken in the creation of this map, but it is provided "as is". LCOG cannot accept any responsibility for errors, omissions, or positional accuracy in the digital data or the underlying records. Current plan designation, zoning, etc., for specific parcels should be confirmed with the appropriate agency. There are no warranties express or implied, accompanying this product. However, notification of any errors will be appreciated.

ATTACHMENT B

2021 Independent Redistricting Committee			
15 Regular Members and 3 Alternates			
Decided on August 4, 2021:			
	Applicants	District #	Geographic Area
5 Regular Members, Selected by Commissioners	Jennifer Waggoner	1	Outside of Florence
	Natalie Fisher	2	City of Springfield
	Morgan Munro	3	City of Eugene
	James Torrey	4	City of Eugene
	Tony Corcoran	5	Cottage Grove
Decided on August 27, 2021:			
10 Additional Regular Members, Selected by the First 5 Above	Alan Laisure	1	Outside Junction City
	LaRece Rivera	1	City of Eugene
	George Grier	2	Outside Springfield
	Rebecca DesPrez *	2	City of Springfield
	Natalie Dybens	3	City of Eugene
	Vincent Murphy ***	3	City of Eugene
	Linda Hamilton	4	City of Eugene
	Madison Hibler (Newell)	4	Inside city limits
	(1) Stefan Ostrach **	4	Outside Eugene
	(2) Laura Fenimore****	4	City of Eugene
	Ashley Pelton	5	Outside Cottage Grove
	Kevin Cronin	5	City of Eugene
3 Alternates, Selected by the First 5 Above	(1) Stefan Ostrach	4	Outside Eugene
	(2) Laura Fenimore	4	City of Eugene
	(3) Ellen McKean	5	City of Eugene

* Rebecca DesPrez resigned 10/6/2021

** #1 Alternate Member, Stefan Ostrach, replaced Rebecca DesPrez effective 10/6/2021

*** Vincent Murphy did not attend any meetings - released from committee on 10/21/2021

**** #2 Alternate Member, Laura Fenimore, replaced Vincent Murphy effective 10/21/2021

ATTACHMENT C

Public Comment for October 25, 2021 IRC Meeting:

I think that the committee has done a thoughtful and diligent job of developing maps that take into consideration the parameters that they discussed. Having reviewed the maps the public has access to, that is, without the overlay information, I believe that the best three are P, H and C. Each seems to cover most of the required and recommended criteria in different ways. I think P does the best job of keeping communities of interest together while balancing other important criteria like equal population, compactness and geographic and transportation boundaries. I speak as a private citizen and not as a voice for the LWVLC. Thank you for your consideration of my remarks.

Paula Grisafi

Submitted on Friday, October 22nd

Public Comment for October 28th

Judy,

Personally and professionally I would like to express support for Map Q. I respect that this map had more committee involvement. I am a Camp Creek resident. Rainbow Water District serves north and west Springfield, and we contract to support smaller water systems in Marcola and along Upper Camp Creek. I believe that District 2 in the Map Q version would best align our customers with common representation.

Thank you for the invitation to provide comment.

Jamie Porter

Superintendent

Rainbow Water District

1550 N 42nd Street, Springfield, OR 97477

PO Box 8, Springfield, OR 97477

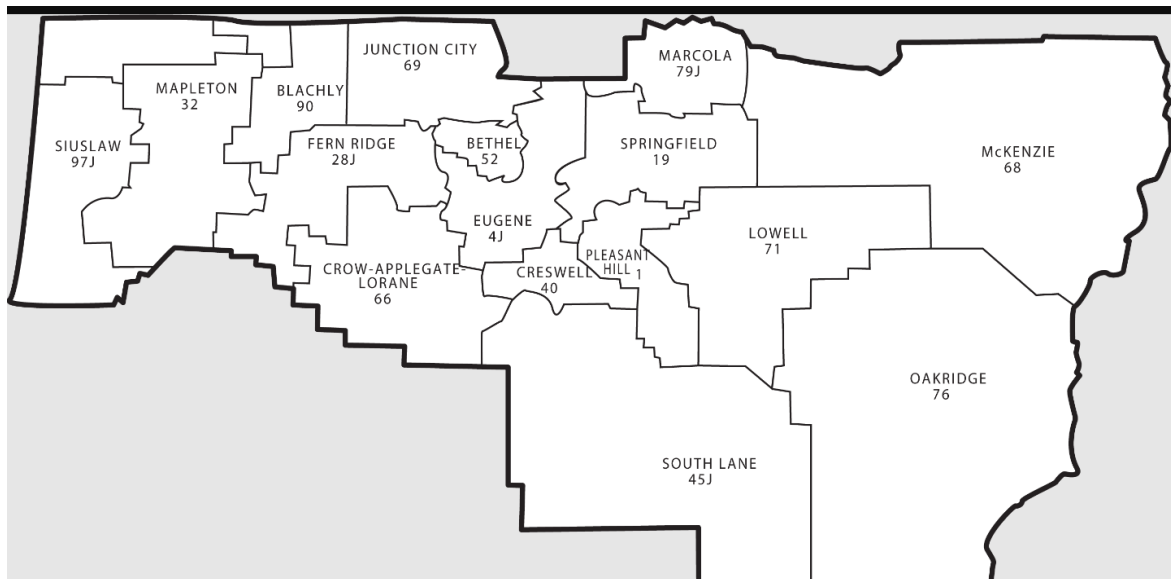
Office 541-746-1676

RWDonline.net

I don't have a clue what you/county/commision are doing by redrawing the boundries but messing with people and sturing the pot.

One needs a crash course in a corn maze to figure these maps out. Why does something always have to be divisive... Set the boundries by geographic lines and major roads period.

Maybe this is the one to follow?



Best Wishes

Marvin

Hello,

Of the current maps submitted I vote for Map C , appears to be most equally representative of the county.

Thank you,

Chris Schoessler

Dear Redistricting Committee,

Thank you for your thorough and thoughtful presentation of various options for our future county commissioners positions. As a rural resident of Eugene, my county commissioner is an important representative in this complicated world.

Please send Map C as your recommendation for approval. **Map C is the most fair, balanced and least disruptive to our democracy.**

Map Q: unusual reaches outside of communities of interest. Jutting fingers of one district divides another district. Combines areas with no commonality.

Map R: substantial changes without need or benefit. Divides areas of common and social interests.

Map J: substantial cuts across geographic boundaries and natural dividing features. It may violate home charter rule, chapter 3, section 10 (3)(C)(ii)(v)

Thank you for your serious consideration of my opinion.

Cindy Land
Eugene OR

Good Morning, Judy.

First off, I would like to express my concern that this whole process was not more widely talked about. I just heard about this process on the radio this morning, so I figured I better take a look. I'm glad I did.

I would like to express great opposition to Map Q. As a former resident of the Lowell/Dexter area and a current resident in rural Lane County near Creswell, that map frightens me. We would be under the thumb of Eugene and those of us who think differently than Eugene residents, (the reason we don't live there, to be honest) would be over ridden on everything. Please do not choose this option.

I would like to express my support for Map R. If we must choose one, that one at least leaves the majority of the rural areas to be represented by their own county representatives. I, and many of my neighbors and friends, are fed up with being ruled by Eugene. Let us have our voice and choose Map R, if you must change boundaries.

Thank you for your time,
Heather Woodhurst
Creswell, Oregon

I do deliveries all throughout Eugene Springfield. It's very obvious the political leanings of certain areas by the large quantity of different political signs in different areas. The current proposed map is most definitely gerrymandered without question. District 5 is a perfect example. You have all the rural areas with conservative political signs being the majority being tied in with the Eugene south hills that are heavily populated and is littered with liberal political signs without a conservative sign to be found. Plus the south hills have a population density high enough to override the proper political representation of rural lane county. Other districts do similar but not to the exact extent of district 5. There are ways to extend the population numbers of districts without fingering them into high population areas of Eugene's university area and south hills. Those two areas need to be their own two districts without being used to overcome the fair representation of rural lane county. I'm an advocate for fair and proper representation of the people. When they are represented fairly and justly the people are happier, representation better serves their needs and political divisions are less argumentative when people feel they have proper representation speaking their voice. I hope this is considered and a proposed gerrymandered map is corrected fairly before it is approved. Thanks for your time and hopefully consideration, Aaron Canizales resident of district 2

Don't care at all for map Q.
I live in the Mohawk Valley and map Q splits up the Valley. I would be in one district while my neighbors on the other side of Marcola Road would be in a different district.
And some people in the Valley would be in the same district as Springfield, which has little in common with us.
There is no reason to chop up the Valley.
We are a unit and need united representation--not fractured .
The other maps seem to understand this and are fine with me.

Frank Greenspan

The current redistricting sham being conducted by the "Democrats" in this state is nothing more than complete political corruption at every level.

Lane County officials should be revolting against this gerrymandering.

The fact that you are not demonstrates your implication and therefore guilt of these crimes.

Jerry

Commissioners,

The task of representing our community should always be an inclusive one. That can, in some ways, be made difficult when going through the redistricting process. As our community changes, however, it is also an opportunity to review how we are representing our constituents.

Eugene is city of neighborhoods, each with their own character, interests, and advocacy needs. For decades, each of them has assembled volunteers to drill down on their area, to study the complexity each has and to ensure that neighbors have a place to come together and advocate for the betterment of them all. This is not to say neighborhoods do not have common interests and advocacy, because they do, but there are inherent aspects of each area that need focus to better serve our citizens.

As you review the maps being considered for your own redistricting, it is important to keep this in mind. Maps C and R divide Bethel and River Road and thus will dilute each's advocacy. Parents in the same school district but live on opposite sides of the same street will have a divided representation at the county.

Moreover, the River Road and Bethel neighborhoods are about to experience very different challenges. With Eugene's approved 27-year UGB plan being primarily extended in West Eugene, the intersection of new development, existing businesses and residents and historical industrial activity will need to be balanced fairly and thoroughly. The River Road area will have its own expansion, but as most of its area has already waged those battles, their future conversations will likely center on implantation of HB2001 as it's only path for growth. Each needs representation that can devote the time required to master their different and competing interests.

I would encourage, recommend and ask you to pass Map J. It ensures both neighborhoods are represented wholly, that Bethel School District's children and parents have a common county commissioner and that, as their commissioner, you are better informed and have a deeper connection to the different and rapid change in trends that will be coming to both areas in the next decade.

Respectfully,

-Daniel Patrick Isaacson

River Road Board Member

Hello Mrs. Williams and Committee Members,

Thank you for your thoughtfulness and all of the deliberations that have gone into this redistricting process. This is a tougher project than anyone on the outside might think and I appreciate your diligent work.

I live just Southeast of the Churchill neighborhood, in West Eugene. I believe the Churchill community should be kept together and not split into separate districts. I am glad to see that these last four maps reflect this desire, though Map J comes a bit close to splitting it. There are several defining features shared by this area that I see are considered already, especially the fact that we have several major transit lines that can serve as natural boundaries. West 11th Ave, Chambers St, Royal Ave, and Roosevelt Blvd are all serving this purpose in the maps and I applaud you for it.

Thank you, again, for putting so much time and energy into this process. I appreciate you.

-Ryan Moore

Eugene Resident

Here's my public comment for the County Redistricting Commission:

I grew up in Eugene, and have lived here most of my life. I'm gay and mixed race, and I recently moved back to Eugene with my Black boyfriend. In my day job, I run a canvassing program under contract with the Oregon Health Authority where we go out to folks in Bethel every day to talk to and help increase Covid awareness and vaccination rates among Communities of Color. Before that, I had been living in Sacramento for a few years — the most diverse city in the US — and I told my boyfriend when we moved up here together: "Don't worry, you'll love it... Eugene's not racist (or homophobic)." Well, imagine my great surprise to learn that a bunch of white people and a reactionary cop on our County Redistricting Commission are proposing maps that would split our home, Bethel (an area that has been historically marginalized and red-lined because of extremely racist government policies), into three different County Commissioner Districts.

Y'all really couldn't gerrymander any harder if you tried. Whoever drew maps C and R is trying to take away my voice, and the voices of the poor, and the voices of Communities of Color. Let me tell you that we see you, we see what you're trying to do here, and Bethel won't tolerate it any more. You're deliberately cracking Communities of Color into balkanized little bites to make sure that "those people" don't have a strong enough voice in our Commissioner Districts to matter.

Maps C and R are complete garbage. I'll make sure all my friends and contacts know exactly who votes for them. Please don't do the same kind of malarkey to my neighborhood that racists have always done. Do better. Do much better.

Cheers,

Andrew Scot Becker

4467 Fergus Ave

Eugene, OR 97402

Good Afternoon, Independent Redistricting Committee,

Thank you for your work on the proposals for county commission districts in Lane County. I wanted to offer on the following comments about proposed maps:

- Map R: Please do not forward this map. Along the Gateway District, it breaks up the city of Springfield between two county commission districts. Gateway and International is the biggest employment area in the city of Springfield. It is were our UGB expansion was in the last decade. This area should be treated as one continuous area. I also note the public analysis identifies. It would be more appropriate to ensure that Gateway and International Way North to the river are included in D2.
- Map C: A solid map. I support forwarding this map. I recognize that D2 needs higher population, and the N. Eugene area is a good match with Springfield because of the transportation connects at Beltine/Gamefarm/I5. etc.

Thank you Judy Williams for forwarding this to the committee for me.

Thanks, Sean

Mayor Sean VanGordon
City of Springfield
225 N. 5th St.
Springfield, Oregon 97477
Office: 541.726.3700
Mobile: 541.221.8006

It seems to me that the maps are being bought by 2 commissioners to their benefit and that is clearly is a conflict of interest and should never be allowed

and should be done only for the best interest of the voters not the politicians.

Herb Newell
herbnewelljr@netscape.net
541-658-5416

Ms Williams,

I am a Springfield resident and strongly prefer the maps that keep Springfield in a separate district from parts of North Eugene. I prefer maps J or Q.

Sincerely,

Irene Henjum

1211 M St, Springfield, OR
541-799-6810



October 28th, 2021

Lane County Independent Redistricting Committee (IRC)
c/o Judy Williams Strategy and Integration Manager
Lane County Administration
125 E. 8th Avenue Eugene, OR 97401

Dear Judy Williams and Independent Redistricting Committee Members,

Thank you once again for the opportunity to provide comment on the redistricting process. On the 18th of October, I testified regarding priorities our organizations are looking at to support. A summary of comments are as follows:

- Small population change doesn't warrant major boundary changes.
- Keep the Eugene metropolitan districts enclosed within Eugene because you can.
- School District Board boundaries, while a nice thought, School Districts, and County Government have different functions.
- To increase the Springfield District boundary, include areas that are like Springfield, not portions of Eugene.

At the time there were limited proposals that met the criteria list above. Due to the Independent Redistricting Committee having more time to amend and submit new map proposals, we did not state which map we supported. With four maps remaining, I wanted to make sure that the IRC knew which map proposal we preferred. Map Proposal C, while not perfect, compared to other maps, follows our priorities the most. Therefore, our preference is map C.

As I mentioned in my last testimony our members have paid close attention to the explosive state-level redistricting process. There were challenges throughout the entire process and an active suit has been filed against the congressional district plan. Since my last testimony, there are two legal challenges to the legislative maps. We recognize this is a challenging process, and we deeply appreciate the committee taking time to consider factors and follow proper criteria and process.

Thank you again for your work and dedication to Lane County. This is a big undertaking.

A handwritten signature in black ink, appearing to read "Tiffany Monroe".

Tiffany Monroe

On Behalf of Lane County Farm Bureau & Lane Families for Farms and Forests.

Honorable Commissioners and Ms Williams

I want to express my appreciation for the hard work and dedication shown by the members of the Independent Redistricting Committee. This is one of the best and most transparent and representative processes that I've seen in my 30+ years in Lane County. The guidance of the Commissioners and the efforts of the Committee have shown great results.

As a Springfield resident, and a member of the Springfield Planning Commission, I wish to express my personal recommendation that map "J" or "Q" be chosen. Both respect Springfield and our urban growth boundary as a community of common interest and include the Glenwood area in our Commissioners district. I appreciate the savings in election costs that map "Q" will bring, and again applaud the inclusion of Glenwood and Seavey Loop area in the Springfield District under map "J". These areas of Springfield are expected to have great amounts of redevelopment in the future, and their inclusion in the District 2 boundary will insure that their interests are included in many of the decisions that will be made for the area by the Springfield Economic Development Agency and the Springfield Planning and Development Department.

Please select Map "J" or "Q" to insure the representation of Springfield is correct for the changes that we anticipate in the future.

Michael Koivula

Ward 2 Springfield

This letter represents my personal opinions. The Springfield Planning Commission has not discussed redistricting and has no official position on map selection.

Hello,

My name is Nick Royal, and I live in Bethel. My neighborhood used to be Red Lined as a way for racists to keep black people like me out of their neighborhoods. Unfortunately, it looks like some people might be trying to do a similar thing today: trying to push an historically marginalized community of interest into three different County Commissioner districts so that we won't have a bigger voice at the table when we vote for County Commission candidates. (Specifically, I'm talking about Map C and Map R.) One of the number one rules for redistricting is to NOT do that, so it really made me think, "why would anybody be trying to do exactly that?"

I'm not necessarily trying to impugn any of your motives, but let's be real here: now that you see it, you can't unsee it. Don't vote for those maps, please. Show us that things really are changing for the better.

Sincerely,

Nicholas Vaughn Royal

4467 Fergus Avenue

Eugene, Oregon 97402

This seems to be done fairly and not politically. I know politics are involved but do the right things.

Dear committee members,

Thank you for your hard work on this once in a decade process. This afternoon I was reviewing the maps that would be considered tonight and noticed that some of the maps (specifically map C) splits my apartment and neighborhood from North Eugene and would place us in Springfield. I believe that the issues that impact this neighborhood are not shared by our neighboring city of Springfield, and are best represented if it remains in the North Eugene/ Eugene districts. Map R I also believe also splits my neighborhood (it's hard to tell based on the quality of the maps) and it would place us in the West Lane County area which is a rural district and would not share the same common interests as we do now in the North Eugene district. I am reaching out in support of maps J and Q. Thank you again for your work and for considering this testimony.

Sierra Dameron

2980 Kipling Way Eugene OR

I'm writing today as an active and involved member of the Bethel community. My thoughts here are entirely on my own behalf, and do not represent the position of any organization, but for context I serve as co-chair of the Active Bethel Community neighborhood association and have served on both the Budget Committee and the Long Range Planning Committee for the Bethel School District. So my interest in the needs of the Bethel community runs deep.

I am concerned about ensuring that my neighbors are fairly represented over the next ten years. Bethel is a vibrant and distinct segment of the Lane County community and we have our own unique interests and needs. I believe it is important that our collective voices are heard and that we have the opportunity to elect County Commissioners who understand our perspective.

For that reason, I am concerned that Map C and Map R under your consideration split our community of interest into multiple districts, diluting our voices. I urge you to consider maps that maintain the integrity of our neighborhood, for example Maps J and Q.

Thank you for taking the time to read my feedback and for your work drawing fair and equitable districts for our county.

- Tai Pruce-Zimmerman

Dear Independent Committee on Redistricting,

I was so pleased to learn in the last few months that Lane County adopts the model the state of Oregon should and has an independent Redistricting committee.

I applied for it with the hopes that my experience and love of all Lane County would be selected.

Weeks after I applied I was informed I had made it as an alternate, however I learned a couple days later that an honest mistake had been made and I had not been chosen.

However, I am now aware two committee members are not only married but also have worked on two of the sitting county commissioners campaigns. This is clearly a conflict of interest and any maps they drew have their personal financial interests at heart.

I would encourage you to choose Map C. This map has the least changes to the current districts but still accommodating and adjusting for population changes. It also keeps all of Springfield together, Eugene within their city limits and rural areas together.

Thank you,

Marie Bowers

Coburg, Oregon

--

Marie Bowers
Bashaw Land & Seed
541-914-0613

The current redistricting sham being conducted by the "Democrats" in this state is nothing more than complete political corruption at every level.

Lane County officials should be revolting against this gerrymandering.

The fact that you are not demonstrates your implication and therefore guilt of these crimes.

Jerry

Public Comment from Zoom Chat Box – October 28th IRC Meeting:

18:23:46 From Suzanne O'Shea : Bethel is also the largest and most diverse neighborhood in Eugene. Our diversity would be better addressed in an urban district.

18:26:41 From Suzanne O'Shea : Map J is the only map that has all of Bethel in one district, D4

18:53:12 From Suzanne O'Shea : That's true, I just heard about this yesterday. Someone from Lane County Government sent us an email.

19:08:31 From Suzanne O'Shea : I like keeping the school district together also!

19:21:42 From Suzanne O'Shea : this map splits the Bethel school district and Active Bethel Community, much as it is presently.

19:31:27 From Suzanne O'Shea : parts of the Bethel School District go south to W 11th, Fairfield School and Danebo School districts

19:42:57 From Suzanne O'Shea : This map puts the Bethel school district in 3 districts and the Neighborhood in mostly 2, a little bit in D5. The Neighborhood is from Clear Lake Road to the railroad tracks south of Roosevelt and Hwy 99vt to Greenhill Road.

19:44:58 From Suzanne O'Shea : The Bethel School District goes from W 11th to Irving School off River Road.

20:03:04 From Suzanne O'Shea : Thank you for map J. It follows the exact boundaries of the Bethel School District, and includes all of the Active Bethel Community Neighborhood, in D4.

20:25:40 From Suzanne O'Shea : Thank you for all your hard work and dedication!

Written Public Comment for November 1st

Ms. Williams,

It has come to my attention via an Oregon Catalyst article that there is a conflict of interest concerning redistricting.

"It turns out one of the members of the Committee who has been producing multiple maps for the committee was also the political consultant for two Commissioners up for re-election, Joe Berney and Heather Buch. He was paid a combined \$106,526.57 by the two sitting commissioners and is drawing new boundaries for those same commissioners. Map Q and J he was a co-author."

This is unacceptable. I strongly encourage you to remove this individual from this process and to investigate both Joe Berney and Heather Buch for what appears to be quid pro quo. It is this type of behavior that voters are upset about. This is the reason why concerned citizens wanted a committee of its peers to have input into this process.

Your name and email address was included in this article as a contact person.

It is not too late to put a hold on redistricting and investigate these three people.

Dawn Royer

Hi Judy,

I think option Q is by far the best redistricting map.

Thank you,

Bruce Berg

Master-Craftsman Photographer

Bruce Berg Photography
work landline phone: 541-726-6119
cell: 541-222-0979
448 D Street, Springfield OR 97477
BruceBerg.com

Dear Redistricting Committee Members:

It has been very interesting to watch you create possible maps for commission districts for the next 10 years. I wish it had been possible to do some of the work in person, rather than virtually on Zoom, and I remain concerned that people will only be able to see maps on computer screens. I continue to hope that larger scale printed versions will be displayed someplace safely in the next few weeks.

As a member of the League of Women Voters, I know the League would like to comment on the process and perhaps make suggestions. I know also we are not going to be able to decide on those things by this meeting. I expect that any comments will be made at the public hearing at the end of the month, or submitted close to that date, and will come from the League President, Charlcie Kaylor.

Thank you for the time and patience and respect you have shown in this process and kudos to committee chair Munro for patience and attention to detail.

Linda Lynch
2681 Garfield
Eugene

Written Public Comment for November 4th

I missed the public comments, unfortunately... but i wanted to express my support for keeping the river road communities intact. Historically redlined districts shouldn't be split up on the whims of a corrupt county commissioner attempting to insert his fingers into the process because he doesn't like representing people of color. QS and R all hold some merit. Map C is a travesty and cannot be allowed by anyone of good conscience.

Thank you.

And please pass my thanks to those currently serving on the INDEPENDENT redistricting committee.

--

Sean Shivers (he/his)

Police Commission - [Commission Members](#)

This is my personal email address and nothing I say here should be taken to represent, in whole or in part, any group of which I am a member.

Hello, Ms Williams

If there is still adequate time to weigh in on the map design, I strongly advocate for inclusion of the Seavey Loop area within the Springfield district.

As this area is within the Springfield Urban Growth Boundary, and as there have been multiple land use policy and decisions that have and likely will occur in this area, and possible annexations, it is imperative that the residents of this area are represented by the Springfield Commissioner, Joe Berney, who also represents the County on the Springfield Economic Development Agency. Decisions within this area require representation.

I am a member of the Springfield Planning Commission, so am aware of the controversial proposed land use changes in this area.

I agree with Mr Grier and Mr Cronin regarding the inadvisability of this change.

Thank you

Mike Koivula
Springfield

Note: these are my personal opinions, the Springfield Planning Commission has not discussed redistricting and has no published opinion on the proposed maps.

ATTACHMENT D

DATE: October 23, 2021

TO: Independent Redistricting Committee Members

From: Stephen Dingle, County Counsel

SUBJECT: Conflict of Interest Question

Issue:

An IRC Member, Linda Hamilton brought up the question about what constitutes a conflict of interest as she understood that a committee member has received funds from two specific commissioners.

In terms of the background from all of the listening sessions and work sessions on the creation of the IRC, the Board specifically discussed and considered whether individuals involved in commissioner's campaigns or their family members should be disqualified from serving on the IRC. The Board ultimately decided NOT to exclude these folks. The Board has stated throughout, that the main goal of this process has been to have as much transparency as possible in order for the public to have confidence in the process and ultimately in the decision. In lieu of excluding folks from serving on the IRC that may have ties to commissioner's campaigns, the Statement of Economic Interest (SEI) Form became part of the application process with the goal to have transparency and to have disclosures of such ties. A recommendation from staff would be that this form may not be the best method moving forward as it doesn't quite get to the question of disclosing just that. It is worth noting that the applicants' addresses were verified in order to determine which district they were in as well and if they were a registered voter in Lane County. There was no other approval or acceptance of application material, such as the SEI. It is also worth noting that the application and all material including the SEI form were redacted in order to achieve anonymity in the selection processes. This redaction effort could have impacts on getting the anticipated information to be disclosed.

I consider members of the IRC as "public officials" as that term is defined in ORS 244.020(15) as they are acting as "agents" of the Board. That means they have ethical obligations/exposure, the county has no ability to change the Oregon Government Ethics Act.

I am unable to provide an individual any individual ethics advice, other than in my opinion they are covered by the ethics law, and should know the OGEC is available to provide advice to any of them. I am willing to be the conduit for anyone with the OGEC as I can often expedite the process.

It is my personal opinion that it would be prudent for anyone to at least disclose and declare their relationship with any of the commissioners. It can protect a member and the process if something is questioned at any point in the future.

If there was a question about how to put parameters around what types of disclosures may be necessary, one might consider disclosing if they had financial interactions with commissioners while they have been running for office or in office.

Since the IRC by-laws do not define "conflict of interest" I would say it definitely would include conflicts as defined by state ethics law. I would personally declare anything that someone might say should have been disclosed if it comes out later. For example, I have been lifetime friends with commissioner x and we have named the commissioner in our will as taking custody of our children if my spouse and I are both deceased.

If anyone is interested in contacting the OGEC, I really encourage you to contact me because I can make sure you provide all of the relevant information. But you can always do it yourself by going to that website and sending them an e-mail (ogec.mail@oregon.gov). Here is an example of what that e-mail might look like:

"I am a member of the Lane County Independent Redistricting Committee (IRC). This is a committee appointed by the Lane County Commissioners and consists of their appointees and then their appointees appointed the remainder of the IRC. The IRC is tasked with presenting the Lane County Board of Commissioners with multiple potential new maps for commissioner districts.

I have [insert what their specific potential financial information-be very complete don't leave anything out]

I am asking what my obligations are under the Oregon Government Ethics Act? Can I vote on the maps? Do I need to declare a potential conflict and then vote? I am asking for your guidance."

Conflict of Interest FAQ - Lane IRC

Committee participants will engage in conflict of interest disclosures at our upcoming meeting. This document is a FAQ for the committee about conflicts of interest, the Oregon laws on this topic for public officials, and the last question in this list includes information about what committee members should consider when we have the option to declare or disclose any potential conflicts of interest we may have.

Q1. What do our committee bylaws say about conflicts of interest?

A1. The IRC bylaws include Article 7 - Conflicts of Interest. They read,

"Committee members shall comply with ORS 244, in determining whether or not to participate in a Committee decision, based on the member or their relative actual or potential conflicts of interest. All Regular and Alternate Committee members shall complete an Oregon Government Ethics Commission Public Official Disclosure form.

In situations which a conflict of interest exists for a Regular or Alternate member, the member shall declare and explain the conflict of interest. No member of the Committee shall vote in a situation in which a conflict of interest exists for that member."

Q2. Are there other governing documents for our committee related to conflicts of interest?

A2. Yes, under Oregon Government Ethics laws committee members are likely considered "public officials" (as defined in ORS 244.020(15) as we are acting as "agents" of the Board of Commissioners. This means that we have ethical obligations and exposure. If committee members are so inclined, they are encouraged to read ORS 244.020 as it goes into great detail on conflicts of interest, roles, and potential issues. Later in the statute you'll find section 244.120 that goes into more detail on how to handle potential and actual conflicts of interest.

Q3. What is a conflict of interest?

A3. The ORS laws around ethics and conflicts of interest for public officials are specific and differentiate between "potential conflicts of interest" and "actual conflicts of interest."

An actual conflict of interest is described in [ORS 244.020 \(1\)](#) as,

"(1) "Actual conflict of interest" means any action or any decision or recommendation by a person acting in a capacity as a public official, the effect of which would be

to the private pecuniary benefit or detriment of the person or the person's relative or any business with which the person or a relative of the person is associated unless the pecuniary benefit or detriment arises out of circumstances described in subsection (13) of this section."

A potential conflict of interest is described in [ORS 244.020](#) (13) as,

"(13) "Potential conflict of interest" means any action or any decision or recommendation by a person acting in a capacity as a public official, the effect of which could be to the private pecuniary benefit or detriment of the person or the person's relative, or a business with which the person or the person's relative is associated, unless the pecuniary benefit or detriment arises out of the following:

- (a) An interest or membership in a particular business, industry, occupation or other class required by law as a prerequisite to the holding by the person of the office or position.
- (b) Any action in the person's official capacity which would affect to the same degree a class consisting of all inhabitants of the state, or a smaller class consisting of an industry, occupation or other group including one of which or in which the person, or the person's relative or business with which the person or the person's relative is associated, is a member or is engaged.
- (c) Membership in or membership on the board of directors of a nonprofit corporation that is tax-exempt under section 501(c) of the Internal Revenue Code."

Q4. Why do we disclose potential conflicts of interest?

A4. We disclose potential conflicts of interest to support transparency within our work. Were a potential conflict of interest to rise to the level of an actual conflict of interest, the public official would need to recuse themselves from the discussion and any decisions made related to their conflict.

Q5. What would be examples of an "actual conflict of interest" and a "potential conflict of interest" for our committee?

A5. If one of our committee members was the majority owner of the company that makes ESRI and we were deciding whether to buy that software license, that would be a very clear actual conflict of interest. The ESRI owner would directly experience a private pecuniary (financial) gain that stemmed from our decision to use ESRI.

A potential conflict of interest that would likely not rise to the level of an actual conflict of interest would be if one of us had made a campaign contribution to a county commissioner (or their opponent). This likely doesn't rise to the level of an "actual" conflict per ORS because the contribution was made in the past (ORS is concerned about future financial benefits) and because the contributor was one among many other people (a whole class of people).

Q6. Did the Board of Commissioners discuss whether previous campaign involvement should disqualify someone from serving on this committee?

A6. Yes, in terms of the background from all of the listening sessions and work sessions on the creation of the IRC, the Board specifically discussed and considered whether individuals involved in commissioner's campaigns or their family members should be disqualified from serving on the IRC. The Board ultimately decided NOT to exclude these folks. The Board has stated throughout, that the main goal of this process has been to have as much transparency as possible in order for the public to have confidence in the process and ultimately in the decision

Q7. What are the methods currently included in our IRC process to support transparency?

A7. In lieu of excluding folks from serving on the IRC that may have ties to commissioner's campaigns, the Statement of Economic Interest (SEI) Form became part of the application process with the goal to have transparency and to have disclosures of such ties.

Q8. Committee members filled out applications to join this committee, how were those applications vetted or verified?

A8. The applicant addresses were verified in order to determine which district they were in and if they were a registered voter in Lane County. There was no other approval or acceptance of application material, such as the SEI. It is also worth noting that the application and all materials, including the SEI form, were partially redacted in order to achieve anonymity in the selection processes.

Q9. We are going to have an opportunity for all committee participants to disclose any potential conflicts of interest in our committee meeting. What kinds of things could be included in a disclosure?

A9. A good rule of thumb for disclosing potential conflicts of interest is to include anything that could raise questions if discovered later.

In Oregon, conflicts of interest are considered by households. If a member of your household (such as your partner, spouse, or child) has a potential conflict of interest you will need to include them in your disclosure.

Things to disclose as potential conflicts include previous campaign involvement with commissioners, any financial interactions with commissioners while they were running for office or in office, any long term personal connections with commissioners, and any business relationships you or a member of your household has or previously had with any commissioner, the county, and/or this committee.

This document summarizes information from ORS 244, as well as including material provided by county counsel and opinions of the committee chair and committee staff. It is not intended as and does not constitute legal advice. For specific legal advice and opinions, please consult the [Oregon Government Ethics Commission](#).

----- Forwarded message -----

From: **GOULD Diane * OGEC** <Diane.GOULD@ogec.oregon.gov>

Date: Mon, Oct 25, 2021, 12:52 PM

Subject: RE: Lane County Redistricting Commission - Conflict inquiry

To: [kevin](mailto:kevin@ogec.oregon.gov) <[kevin](mailto:kevin@ogec.oregon.gov)>

Cc: HUNTER David * OGEC <David.HUNTER@ogec.oregon.gov>

Dear Mr. Cronin,

It was nice speaking with you on the phone earlier. I understand that you would like a written answer to your question from me, as well. As I understand it, you have been appointed to the Lane County Redistricting Commission to redraw boundaries for the county electoral districts, which is done every 10 years. This Commission was selected to be non-partisan and therefore the identities of the applicants was not disclosed during the selection process. The task of the Commission is to draw three maps to recommend to the current County Commissioners for adoption.

You are inquiring about possible conflicts of interest you as a Commission member could have due to the fact that your previous media business had a few County Commissioners or their campaigns as clients in approximately 2018. As we discussed, circumstances alone do not create a *statutory* conflict of interest. A conflict of interest only occurs when you take an action, or make a decision or recommendation in your official capacity as a redistricting commissioner that would or could financially impact you, a relative, or a business with which you or a relative is associated. For example, If you participated in a decision as a commissioner to solicit bids from local cartographers to aid you in drawing the maps and you or your relative was a cartographer, you would be met with a conflict of interest because that action **could** financially impact you or your relative. This would be a *potential conflict* only as described below. Also described below is the prohibited use of office statute.

CONFLICT OF INTEREST

ORS 244.020(1) defines an actual conflict of interest and ORS 244.020(13) defines a potential conflict of interest. A public official is met with either an actual or potential conflict of interest when participating in an official capacity, in any action, decision, or recommendation, if the effect would or could be to the private pecuniary benefit or detriment of the public official, the public official's relative, or any business with which either are associated.

The difference between an actual and potential conflict of interest is determined by the certainty of the private financial impact. An **actual conflict** of interest occurs when a public official participates in an official action that **would** have a direct financial impact on themselves, a relative, or any business with which they or a relative is associated. A **potential conflict** of interest occurs when a public official's action, decision or recommendation **could** have a financial impact on themselves, a relative, or any business with which they or a relative is associated.

ORS 244.120 directs public officials how to resolve a conflict of interest, depending on the type of public position they hold. A public official who was elected or appointed to a governing body, board, or commission, when met with a conflict of interest, must on each occasion, publicly announce the nature of the conflict, regardless of whether the conflict is actual or potential. Then, if the conflict is actual, the official must also refrain from any discussion, debate or vote on the issue giving rise to the conflict. If the conflict is potential, the official may participate in official actions following their public disclosure. [ORS 244.120(2)]

Prohibited Use of Office

ORS 244.040(1) prohibits public officials from using or attempting to use their official position to obtain a financial gain or avoid a financial detriment for themselves, a relative or household member, or a business with which they or a relative or household member are associated, if the financial benefit would not have been available but for holding their official position. This prohibition applies regardless of whether a conflict of interest is disclosed. [ORS 244.040(7)]

It does not appear from the information you have provided, that you would be met with a conflict of interest or a prohibited use of office in working on the Redistricting Commission, but every situation is very fact-specific. Every public official must decide if they have a conflict of interest or if their official actions would place them in jeopardy of using their public office for personal financial gain, but if you run into a specific question as you begin your work on the commission, please contact our office again. We are available by phone at 503-378-5105 or by email at mail@ogec.oregon.gov Good luck and thank you for this valuable service for the citizens of Lane County.

Best,

Diane Gould
Compliance and Education Coordinator
Oregon Government Ethics Commission
3218 Pringle Rd. SE, #220, Salem, OR 97302
Ph: 503-378-6806

*****DISCLAIMER*****

This staff advice is provided under the authority given in ORS 244.284(1). This opinion offers guidance on how Oregon Government Ethics law may apply to the specific facts described in your request. This opinion is based on my understanding and analysis of the specific circumstances you described and should not be applied to circumstances that differ from those discussed in this request.

From: HUNTER David * OGEC <David.HUNTER@ogec.oregon.gov> **On Behalf Of** OGEC Mail * OGEC
Sent: Monday, October 25, 2021 8:55 AM
To: GOULD Diane * OGEC <Diane.GOULD@ogec.oregon.gov>
Subject: FW: Lane County Redistricting Commission - Conflict inquiry

David R Hunter

Oregon Government Ethics Commission
3218 Pringle Rd SE STE 220
Salem OR 97302-1680
Direct 503-378-5105
Fax 503-373-1456

From: Kevin Cronin <[kevin\[REDACTED\]](mailto:kevin[REDACTED])>
Sent: Monday, October 25, 2021 8:54 AM
To: OGEC Mail * OGEC <OGEC.Mail@ogec.oregon.gov>
Subject: Fwd: Lane County Redistricting Commission - Conflict inquiry

Hi there,
Please send this to Diane Gould. I spoke with her on the phone and apparently I keep messing up her email.

Thanks!
-Kevin

----- Forwarded message -----

From: Kevin Cronin <[kevin\[REDACTED\]](mailto:kevin[REDACTED])>
Date: Mon, Oct 25, 2021 at 8:37 AM
Subject: Lane County Redistricting Commission - Conflict inquiry
To: <diane.gould@ogec.or.gov>

Hi Diane,

Thank you for helping me work through this and consider things carefully.

Myself and my wife applied to the County's redistricting commission. The commission was selected in a double blind process, with the commissioners picking 5 members and those five picking two members each plus three alternates, for a total of 15 members and 3 alternates.

In my economic disclosure statement, my wife and I reported that I owned a business that does digital media and advertising contracts for political candidates. I've worked on projects with 3 of the current 5 commissioners. None in the last 2 years.

Our committee is tasked with recommending 2-4 maps to the board of county commissioners, which they will adopt one map.

Do me or my wife have a conflict of interest?

Sincerely,

Kevin Cronin
[REDACTED]

ATTACHMENT E

Independent Redistricting Committee: Winnow Down Maps

Monday, October 25, 2021

1st Choice = 3 points

2nd Choice = 2 points

3rd Choice = 1 point

Maps that get 1 point or less get eliminated

Round 1:

Maps	Jennifer Waggoner	Alan Laisure	LaRece Rivera	Natalie Fisher	George Grier	Morgan Munro	Natalie Dybens	Jim Torrey	Stefan Ostrach	Linda Hamilton	Madison Newell	Laura Fenimore	Tony Corcoran	Ashley Pelton	Kevin Cronin	Count
Map J			1	3	3	3			3		3		2		2	20
Map C	3	3						3		3		3				15
Map P	2		3	1		2		2			2			2	1	15
Map Q		2		2	1				2				3		3	13
Map S	1	1						1		2				3		8
Map H					2		2			1		1				6
Map R							3				1	2				6
Map L			2						1				1			4
Map K							1									1

**
*

* Map K was eliminated per committee vote to eliminate maps with 1 point or less.

Result: Top 7 maps move to Round 2

** Map L was removed after the Round 1 vote by the map maker

Round 2:

Maps	Jennifer Waggoner	Alan Laisure	LaRece Rivera	Natalie Fisher	George Grier	Morgan Munro	Natalie Dybens	Jim Torrey	Stefan Ostrach	Linda Hamilton	Madison Newell	Laura Fenimore	Tony Corcoran	Ashley Pelton	Kevin Cronin	Count
Map J		1	3	3	3	3			3		3		2	2	2	25
Map Q		2	2	2	2		1		2				3		3	17
Map C	3	3						3		3		3				15
Map R							3				2	2	1			8
Map H					1		2	1		1		1			1	7
Map S	1									2				3		6
Map P	2			1		2										5

Result: Top 4 maps moving forward to a vote on October 28th

ATTACHMENT F

Independent Redistricting Committee

Thursday, October 28, 2021

1st Choice = 3 points

2nd Choice = 2 points

3rd Choice = 1 point

Maps	Jennifer Waggoner	Alan Laisure	LaRece Rivera	Natalie Fisher	George Grier	Morgan Munro	Natalie Dybens	Jim Torrey	Stefan Ostrach	Linda Hamilton	Laura Fenimore	Tony Corcoran	Ashley Pelton	Kevin Cronin	Ellen McKean *	Count	Rank for BCC **	How many had map as:		
																		1st Choice	2nd Choice	3rd Choice
Map J		3	2	3	3	3	1		3			3	2	2	3	28	1st	7	3	1
Map Q		1	3	2	2		2	2				2	3	3	2	22	2nd	3	6	1
Map C		3	2		1			3		3	3	1				16	3rd	4	1	2
Map R							3	1		2	2					8		1	2	1

* Regular Member, Madison Newell had to leave prior to the vote. Per bylaws, Article IV (B) an alternate stands in with all of the rights and privileges of a regular member

** Per Lane Code 21.001 (D) (3): The proposals must be ranked by the IRC in the order of its preference